



**ELECTRONIC COPY**

## LABORATORY GROWN DIAMOND REPORT

|                         |                             |
|-------------------------|-----------------------------|
| December 16, 2023       |                             |
| IGI Report Number       | LG612301821                 |
| Description             | LABORATORY GROWN<br>DIAMOND |
| Shape and Cutting Style | ROUND BRILLIANT             |
| Measurements            | 6.62 - 6.65 X 4.04 MM       |

## GRADING RESULTS

|               |            |
|---------------|------------|
| Carat Weight  | 1.09 CARAT |
| Color Grade   | E          |
| Clarity Grade | VVS 2      |
| Cut Grade     | IDEAL      |

### ADDITIONAL GRADING INFORMATION

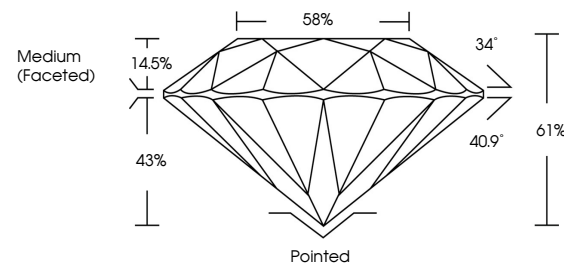
|                |   |
|----------------|---|
| Polish         | EXCELLENT   |
| Symmetry       | EXCELLENT   |
| Fluorescence   | NONE  |
| Inscription(s) |  LG612301821 |

Comments: As Grown - No indication of post-growth treatment.  
This Laboratory Grown Diamond was created by High Pressure High Temperature (HPHT) growth process.  
Type II

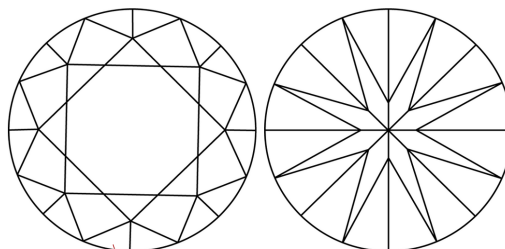
## LABORATORY GROWN DIAMOND REPORT

LG612301821  
Report verification at [igi.org](https://igi.org)

## PROPORTIONS



## CLARITY CHARACTERISTICS



### KEY TO SYMBOLS

Red symbols indicate internal characteristics.  
Green symbols indicate external characteristics.

LABORATORY GROWN  
DIAMOND REPORT

## GRADING SCALES

## CLARITY

| IF                  | VVS <sup>1-2</sup>          | VS <sup>1-2</sup>      | SI <sup>1-2</sup> | I <sup>1-3</sup> |
|---------------------|-----------------------------|------------------------|-------------------|------------------|
| Internally Flawless | Very Very Slightly Included | Very Slightly Included | Slightly Included | Included         |

**COLOR**

D E F G H I J Faint Very Light Light



Sample Image Used



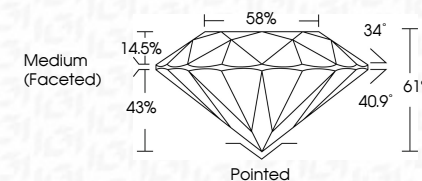
© IGI 2020, International Gemological Institute

FD - 10 20

## LABORATORY GROWN DIAMOND REPORT

|                         |                             |
|-------------------------|-----------------------------|
| December 16, 2023       |                             |
| IGI Report Number       | LG612301821                 |
| Description             | LABORATORY GROWN<br>DIAMOND |
| Shape and Cutting Style | ROUND BRILLIANT             |
| Measurements            | 6.62 - 6.65 X 4.04 MM       |

| GRADING RESULTS |            |
|-----------------|------------|
| Carat Weight    | 1.09 CARAT |
| Color Grade     | E          |
| Clarity Grade   | VVS 2      |
| Cut Grade       | IDEAL      |



### ADDITIONAL GRADING INFORMATION

|  |   |
|--|---|
| Polish   | EXCELLENT   |
| Symmetry   | EXCELLENT   |
| Fluorescence   | NONE  |
| Inscription(s)   |  LG612301821 |
| Comments: As Grown - No indication of post-growth treatment.                                       |   |
| This Laboratory Grown Diamond was created by High Pressure High Temperature (HPHT) growth process. |   |
| Type II  |   |



December 16, 2023  
 LGI Report No LG612301821  
 ROUND BRILLIANT

|                       |                    |
|-----------------------|--------------------|
| ROUND BRILLIANT       |                    |
| 5.52 - 6.65 X 4.04 MM |                    |
| Carat Weight          | 1.09 CARAT         |
| Color Grade           | E                  |
| Clarity Grade         | VVS 2              |
| Cut Grade             | IDEAL              |
| Depth                 | 61%                |
| Table                 | 58%                |
| Grade                 | Medium (Excellent) |

|              | Pointed | EXCELLENT | EXCELLENT | NONE |
|--------------|---------|-----------|-----------|------|
| Culet        |         |           |           |      |
| Polish       |         |           |           |      |
| Symmetry     |         |           |           |      |
| Fluorescence |         |           |           |      |

**Comments:**  
As Grown - No indication of post-growth treatment.