

ELECTRONIC COPY

LABORATORY GROWN DIAMOND REPORT

December 16, 2023	
IGI Report Number	LG612301961
Description	LABORATORY GROWN DIAMOND
Shape and Cutting Style	ROUND BRILLIANT
Measurements	6.54 - 6.56 X 4.07 MM

GRADING RESULTS

Carat Weight	1.08 CARAT
Color Grade	E
Clarity Grade	VVS 1
Cut Grade	IDEAL

ADDITIONAL GRADING INFORMATION

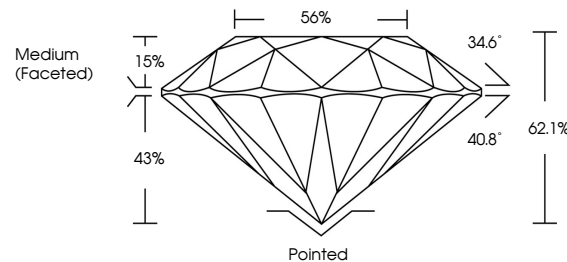
Polish	EXCELLENT
Symmetry	EXCELLENT
Fluorescence	NONE
Inscription(s)	 LG612301961

Comments: As Grown - No indication of post-growth treatment.
This Laboratory Grown Diamond was created by High Pressure High Temperature (HPHT) growth process.
Type II

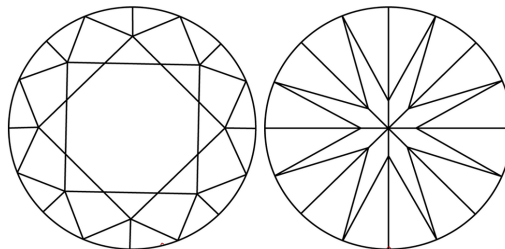
LABORATORY GROWN DIAMOND REPORT

LG612301961
Report verification at igi.org

PROPORTIONS



CLARITY CHARACTERISTICS



KEY TO SYMBOLS

Red symbols indicate internal characteristics.
Green symbols indicate external characteristics.

LABORATORY GROWN
DIAMOND REPORT

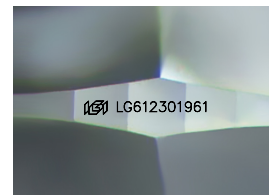
GRADING SCALES

CLARITY

IF	VVS ¹⁻²	VS ¹⁻²	SI ¹⁻²	I ¹⁻³
Internally Flawless	Very Very Slightly Included	Very Slightly Included	Slightly Included	Included

COLOR

D E F G H I J Faint Very Light Light



Sample Image Used



© IGI 2020, International Gemological Institute

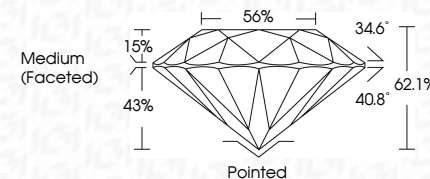
FD - 10 20

LABORATORY GROWN DIAMOND REPORT

December 16, 2023	
IGI Report Number	LG612301961
Description	LABORATORY GROWN DIAMOND
Shape and Cutting Style	ROUND BRILLIANT
Measurements	6.54 - 6.56 X 4.07 MM

GRADING RESULTS

Carat Weight	1.08 CARAT
Color Grade	E
Clarity Grade	VVS 1
Cut Grade	IDEAL



ADDITIONAL GRADING INFORMATION

Polish	EXCELLENT
Symmetry	EXCELLENT
Fluorescence	NONE
Inscription(s)	 LG612301961
Comments: As Grown - No indication of post-growth treatment.	
This Laboratory Grown Diamond was created by High Pressure High Temperature (HPHT) growth process.	
Type II	



December 16, 2023	
IGL Report No G5912301191	
ROUND BRILLIANT	
6.54 - 6.58 X 4.07 MM	1.08 CARAT
Color Grade	VVS 1
Clarity Grade	IDEAL
Cut Grade	62.1%
Depth	56%
Table	Medium (Faceted)
Girdle	
Culet	Pointed
Pavil.	EXCELLENT
Symmetry	EXCELLENT
Fluorescence	NONE
Inclusions(s)	#891 G5912301191
Comments:	No indication of post-growth treatment. This Laboratory Grown Diamond was created by High Pressure High Temperature (HPHT) growth process. Type II