

ELECTRONIC COPY

LABORATORY GROWN DIAMOND REPORT

December 13, 2023	
IGI Report Number	LG612302234
Description	LABORATORY GROWN DIAMOND
Shape and Cutting Style	ROUND BRILLIANT
Measurements	7.85 - 7.88 X 4.89 MM

GRADING RESULTS

Carat Weight	1.88 CARAT
Color Grade	E
Clarity Grade	VS 1
Cut Grade	IDEAL

ADDITIONAL GRADING INFORMATION

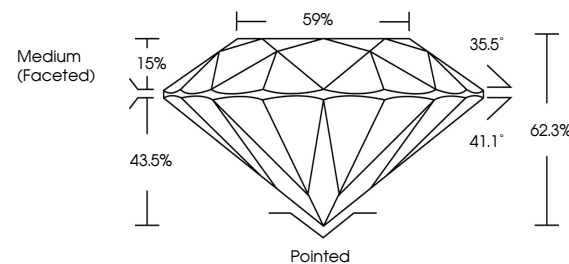
Polish	EXCELLENT
Symmetry	EXCELLENT
Fluorescence	NONE
Inscription(s)	15 LG612302234

Comments: This Laboratory Grown Diamond was created by Chemical Vapor Deposition (CVD) growth process and may include post-growth treatment.
Type IIa

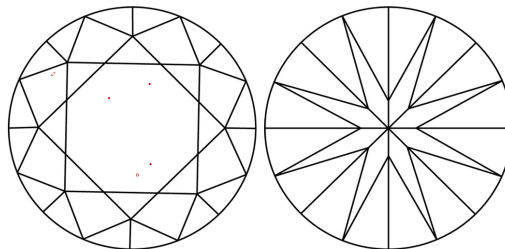
LABORATORY GROWN DIAMOND REPORT

LG612302234
Report verification at igi.org

PROPORTIONS



CLARITY CHARACTERISTICS



KEY TO SYMBOLS

Red symbols indicate internal characteristics.
Green symbols indicate external characteristics.

LABORATORY GROWN
DIAMOND REPORT

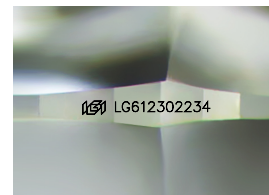
GRADING SCALES

CLARITY

IF	VVS ¹⁻²	VS ¹⁻²	SI ¹⁻²	I ¹⁻³
Internally Flawless	Very Very Slightly Included	Very Slightly Included	Slightly Included	Included

COLOR

D E F G H I J Faint Very Light Light



Sample Image Used



© IGI 2020, International Gemological Institute

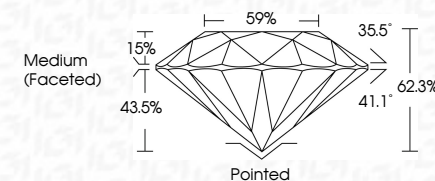
FD - 10 20

LABORATORY GROWN DIAMOND REPORT


December 13, 2023	
IGI Report Number	LG612302234
Description	LABORATORY GROWN DIAMOND
Shape and Cutting Style	ROUND BRILLIANT
Measurements	7.85 - 7.88 X 4.89 MM

GRADING RESULTS

Carat Weight	1.88 CARAT
Color Grade	E
Clarity Grade	VS 1
Cut Grade	IDEAL



ADDITIONAL GRADING INFORMATION

Polish	EXCELLENT
Symmetry	EXCELLENT
Fluorescence	NONE
Inscription(s)	 LG612302234
<p>Comments: This Laboratory Grown Diamond was created by Chemical Vapor Deposition (CVD) growth process and may include post-growth treatment.</p> <p>Type IIa</p>	



IG

December 13, 2023	1.88 CARAT
GI Report No LG512302234	VS 1
ROUND BRILLIANT	IDEAL
	62.5%
	59%
7.85 - 7.88 X 4.89 MM	Medium Faceted
	Pointed
	EXCELLENT
	EXCELLENT
	NONE
	469 LG512302234
Comments:	
This is a Natural, Grown Diamond was treated by Chemical Vapor Deposition (CVD) growth process and may include post-growth treatment.	
Type IIA	