

ELECTRONIC COPY

LABORATORY GROWN DIAMOND REPORT

December 13, 2023	
IGI Report Number	LG612302942
Description	LABORATORY GROWN DIAMOND
Shape and Cutting Style	ROUND BRILLIANT
Measurements	6.58 - 6.61 X 4.05 MM

GRADING RESULTS

Carat Weight	1.09 CARAT
Color Grade	D
Clarity Grade	VVS 2
Cut Grade	EXCELLENT

ADDITIONAL GRADING INFORMATION

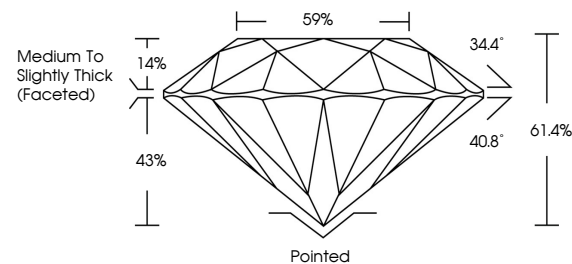
Polish	EXCELLENT
Symmetry	EXCELLENT
Fluorescence	NONE
Inscription(s)	 LG612302942

Comments: As Grown - No indication of post-growth treatment.
This Laboratory Grown Diamond was created by High Pressure High Temperature (HPHT) growth process.
Type II

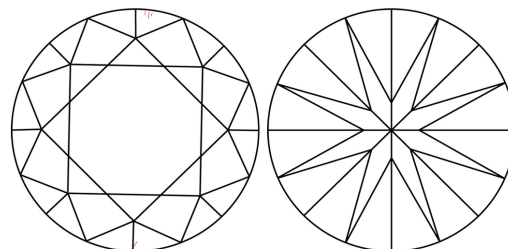
LABORATORY GROWN DIAMOND REPORT

LG612302942
Report verification at igi.org

PROPORTIONS



CLARITY CHARACTERISTICS



KEY TO SYMBOLS

Red symbols indicate internal characteristics.
Green symbols indicate external characteristics.

LABORATORY GROWN
DIAMOND REPORT

GRADING SCALES

CLARITY

IF	VVS ¹⁻²	VS ¹⁻²	SI ¹⁻²	I ¹⁻³
Internally Flawless	Very Very Slightly Included	Very Slightly Included	Slightly Included	Included

COLOR

D E F G H I J Faint Very Light Light



Sample Image Used



© IGI 2020, International Gemological Institute

FD - 10 20

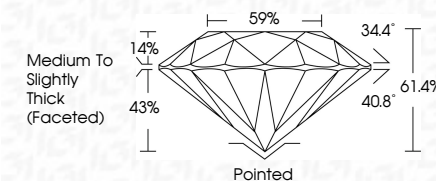
www.igi.org

LABORATORY GROWN DIAMOND REPORT

December 13, 2023	
IGI Report Number	LG612302942
Description	LABORATORY GROWN DIAMOND
Shape and Cutting Style	ROUND BRILLIANT
Measurements	6.58 - 6.61 X 4.05 MM

GRADING RESULTS

Carat Weight	1.09 CARAT
Color Grade	D
Clarity Grade	VVS 2
Cut Grade	EXCELLENT



ADDITIONAL GRADING INFORMATION

Polish	EXCELLENT
Symmetry	EXCELLENT
Fluorescence	NONE
Inscription(s)	IGI LG612302942
Comments: As Grown - No indication of post-growth treatment.	
This Laboratory Grown Diamond was created by High Pressure High Temperature (HPHT) growth process.	
Type II	



December 13, 2023								
GI Report No. L6512302942								
ROUND BRILLIANT								
1.09 CARAT	D	VVS 2	EXCELLENT	61.4%	59%	Medium to Slightly Thick Faceted		
						Pointed		
						EXCELLENT		
						EXCELLENT		
						NONE		
						L651 L6512302942		
<p>Comments: - No indication of post-growth treatment.</p> <p>This Laboratory Grown Diamond was created by High Pressure High Temperature (HPHT) growth process.</p> <p>Type II</p>								