



**INTERNATIONAL  
GEMOLOGICAL  
INSTITUTE**

**ELECTRONIC COPY**

**LABORATORY GROWN  
DIAMOND REPORT**

**LG612319429**

**IGI LABORATORY GROWN  
DIAMOND ID REPORT**

December 14, 2023  
IGI Report Number **LG612319429**  
**ROUND BRILLIANT**  
**4.67 - 4.71 X 2.83 MM**  
Carat Weight 0.38 CARAT  
Color Grade E  
Clarity Grade VVS 1  
Cuf Grade IDEAL  
Polish EXCELLENT  
Symmetry EXCELLENT  
Fluorescence NONE  
Inscription(s) LG612319429

Comments: HEARTS & ARROWS This Laboratory Grown Diamond was created by Chemical Vapor Deposition (CVD) growth process and may include post-growth treatment. Type Ila

**LABORATORY GROWN DIAMOND REPORT**

**IGI LABORATORY GROWN DIAMOND IDENTIFICATION REPORT**

December 14, 2023  
IGI Report Number LG612319429  
Description LABORATORY GROWN DIAMOND  
Shape and Cutting Style ROUND BRILLIANT  
Measurements 4.67 - 4.71 X 2.83 MM

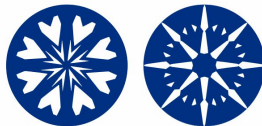
**GRADING RESULTS**

Carat Weight 0.38 CARAT  
Color Grade E  
Clarity Grade VVS 1  
Cut Grade IDEAL

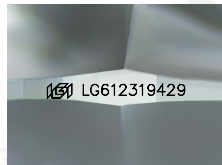
**ADDITIONAL GRADING INFORMATION**

Polish EXCELLENT  
Symmetry EXCELLENT  
Fluorescence NONE  
Inscription(s) LG612319429

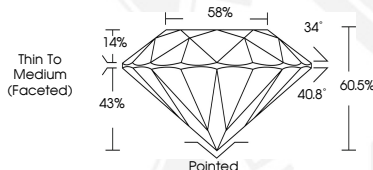
Comments: HEARTS & ARROWS  
This Laboratory Grown Diamond was created by Chemical Vapor Deposition (CVD) growth process and may include post-growth treatment.  
Type Ila



HEARTS & ARROWS



Sample Image Used



**IGI LABORATORY GROWN  
DIAMOND ID REPORT**

December 14, 2023  
IGI Report Number **LG612319429**  
**ROUND BRILLIANT**  
**4.67 - 4.71 X 2.83 MM**  
Carat Weight 0.38 CARAT  
Color Grade E  
Clarity Grade VVS 1  
Cuf Grade IDEAL  
Polish EXCELLENT  
Symmetry EXCELLENT  
Fluorescence NONE  
Inscription(s) LG612319429

Comments: HEARTS & ARROWS This Laboratory Grown Diamond was created by Chemical Vapor Deposition (CVD) growth process and may include post-growth treatment. Type Ila

THIS DOCUMENT WAS PRODUCED WITH THE FOLLOWING SECURITY MEASURES: SPECIAL DOCUMENT PAPER, INK SCREENS, WATERMARK, BACKGROUND DESIGN, HOLOGRAM AND OTHER SECURITY FEATURES NOT LISTED AND DO EXCEED DOCUMENT SECURITY INDUSTRY GUIDELINES.

For terms & conditions and to verify this report, please visit [www.igi.org](http://www.igi.org)