



**INTERNATIONAL
GEMOLOGICAL
INSTITUTE**

LABORATORY GROWN DIAMOND REPORT

IGI LABORATORY GROWN DIAMOND IDENTIFICATION REPORT

December 15, 2023
 IGI Report Number LG612323164
 Description LABORATORY GROWN DIAMOND
 Shape and Cutting Style ROUND BRILLIANT
 Measurements 4.67 - 4.69 X 2.80 MM

GRADING RESULTS

Carat Weight 0.37 CARAT
 Color Grade D
 Clarity Grade VVS 2
 Cut Grade IDEAL

ADDITIONAL GRADING INFORMATION

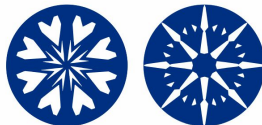
Polish EXCELLENT
 Symmetry EXCELLENT
 Fluorescence NONE
 Inscription(s) IGI LG612323164

Comments: HEARTS & ARROWS
 This Laboratory Grown Diamond was created by Chemical Vapor Deposition (CVD) growth process and may include post-growth treatment.
 Type IIa

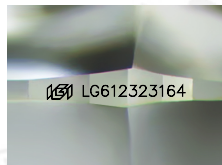
ELECTRONIC COPY

**LABORATORY GROWN
DIAMOND REPORT**

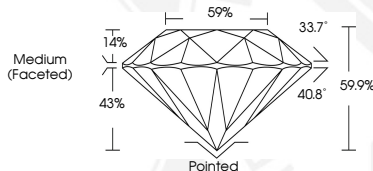
LG612323164



HEARTS & ARROWS



Sample Image Used



**IGI LABORATORY GROWN
DIAMOND ID REPORT**

December 15, 2023
 IGI Report Number LG612323164
ROUND BRILLIANT
4.67 - 4.69 X 2.80 MM
 Carat Weight 0.37 CARAT
 Color Grade D
 Clarity Grade VVS 2
 Cut Grade IDEAL
 Polish EXCELLENT
 Symmetry EXCELLENT
 Fluorescence NONE
 Inscription(s) IGI LG612323164

Comments: HEARTS & ARROWS This Laboratory Grown Diamond was created by Chemical Vapor Deposition (CVD) growth process and may include post-growth treatment. Type Ila

**IGI LABORATORY GROWN
DIAMOND ID REPORT**

December 15, 2023
 IGI Report Number LG612323164
ROUND BRILLIANT
4.67 - 4.69 X 2.80 MM
 Carat Weight 0.37 CARAT
 Color Grade D
 Clarity Grade VVS 2
 Cut Grade IDEAL
 Polish EXCELLENT
 Symmetry EXCELLENT
 Fluorescence NONE
 Inscription(s) IGI LG612323164

Comments: HEARTS & ARROWS This Laboratory Grown Diamond was created by Chemical Vapor Deposition (CVD) growth process and may include post-growth treatment. Type Ila

THIS DOCUMENT WAS PRODUCED WITH THE FOLLOWING SECURITY MEASURES: SPECIAL DOCUMENT PAPER, INK SCREENS, WATERMARK, BACKGROUND DESIGN, HOLOGRAM AND OTHER SECURITY FEATURES NOT LISTED AND DO EXCEED DOCUMENT SECURITY INDUSTRY GUIDELINES.

For terms & conditions and to verify this report, please visit www.igi.org