



ELECTRONIC COPY

LABORATORY GROWN DIAMOND REPORT

LG612331466

Report verification at igi.org

LABORATORY GROWN DIAMOND REPORT

LABORATORY GROWN DIAMOND REPORT

LABORATORY GROWN DIAMOND REPORT

February 5, 2024
IGI Report Number LG612331466
Description LABORATORY GROWN DIAMOND
Shape and Cutting Style ROUND BRILLIANT
Measurements 6.86 - 6.90 X 4.07 MM

GRADING RESULTS

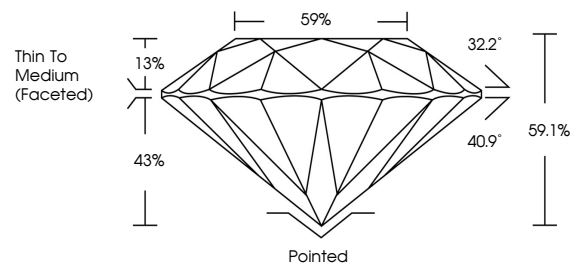
Carat Weight 1.17 CARAT
Color Grade E
Clarity Grade VVS 2
Cut Grade EXCELLENT

ADDITIONAL GRADING INFORMATION

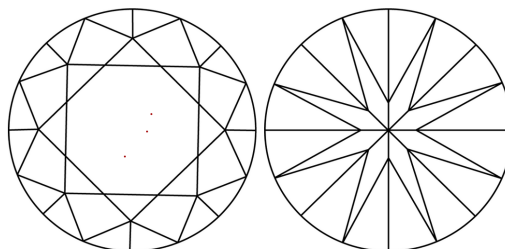
Polish EXCELLENT
Symmetry EXCELLENT
Fluorescence NONE
Inscription(s) IGI LG612331466

Comments: This Laboratory Grown Diamond was created by Chemical Vapor Deposition (CVD) growth process and may include post-growth treatment. Type IIa

PROPORTIONS



CLARITY CHARACTERISTICS



KEY TO SYMBOLS

Red symbols indicate internal characteristics.
Green symbols indicate external characteristics.

GRADING SCALES

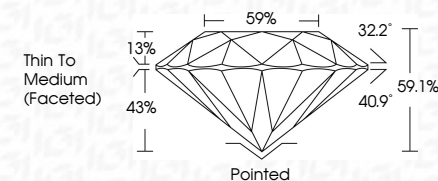
CLARITY

Table mapping clarity grades (IF, VVS 1-2, VS 1-2, SI 1-2, I 1-3) to internal characteristics (Internally Flawless, Very Very Slightly Included, Very Slightly Included, Slightly Included, Included).

COLOR

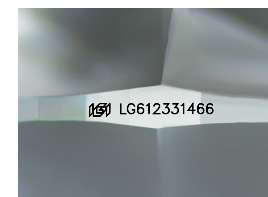
Table mapping color grades (D, E, F, G, H, I, J) to color descriptions (Faint, Very Light, Light).

February 5, 2024
IGI Report Number LG612331466
Description LABORATORY GROWN DIAMOND
Shape and Cutting Style ROUND BRILLIANT
Measurements 6.86 - 6.90 X 4.07 MM
GRADING RESULTS
Carat Weight 1.17 CARAT
Color Grade E
Clarity Grade VVS 2
Cut Grade EXCELLENT



ADDITIONAL GRADING INFORMATION

Polish EXCELLENT
Symmetry EXCELLENT
Fluorescence NONE
Inscription(s) IGI LG612331466
Comments: This Laboratory Grown Diamond was created by Chemical Vapor Deposition (CVD) growth process and may include post-growth treatment. Type IIa



Sample Image Used



Summary of report details including date, report number, description, measurements, grading results, and additional information.



IGI