



ELECTRONIC COPY

LABORATORY GROWN DIAMOND REPORT

December 26, 2023
IGI Report Number LG612336551
Description LABORATORY GROWN DIAMOND
Shape and Cutting Style ROUND BRILLIANT
Measurements 11.43 - 11.48 X 7.08 MM

GRADING RESULTS

Carat Weight 5.72 CARATS
Color Grade G
Clarity Grade VS 1
Cut Grade IDEAL

ADDITIONAL GRADING INFORMATION

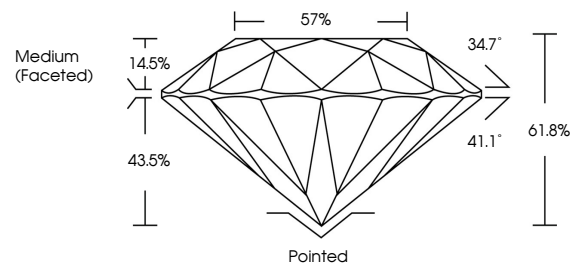
Polish EXCELLENT
Symmetry EXCELLENT
Fluorescence NONE
Inscription(s) IGI LG612336551

Comments: HEARTS & ARROWS
This Laboratory Grown Diamond was created by Chemical Vapor Deposition (CVD) growth process and may include post-growth treatment. Type IIa

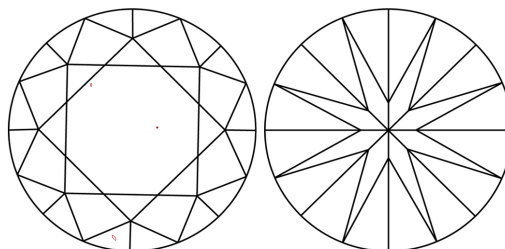
LABORATORY GROWN DIAMOND REPORT

LG612336551
Report verification at igi.org

PROPORTIONS

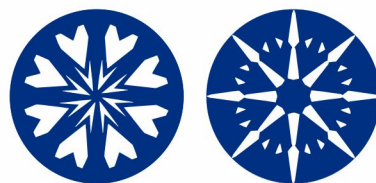


CLARITY CHARACTERISTICS



KEY TO SYMBOLS

Red symbols indicate internal characteristics.
Green symbols indicate external characteristics.



LABORATORY GROWN DIAMOND REPORT

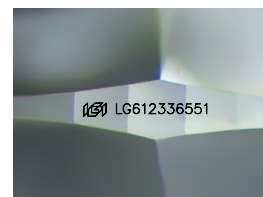
GRADING SCALES

CLARITY

Table mapping clarity grades (IF, VVS, VS, SI, I) to descriptions (Internally Flawless, Very Very Slightly Included, etc.)

COLOR

Table mapping color grades (D, E, F, G, H, I, J) to descriptions (Faint, Very Light, Light)



Sample Image Used

LABORATORY GROWN DIAMOND REPORT

December 26, 2023
IGI Report Number LG612336551
Description LABORATORY GROWN DIAMOND
Shape and Cutting Style ROUND BRILLIANT
Measurements 11.43 - 11.48 X 7.08 MM

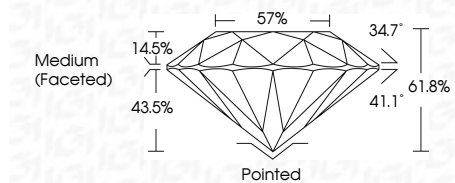
GRADING RESULTS

Carat Weight 5.72 CARATS
Color Grade G
Clarity Grade VS 1
Cut Grade IDEAL

ADDITIONAL GRADING INFORMATION

Polish EXCELLENT
Symmetry EXCELLENT
Fluorescence NONE
Inscription(s) IGI LG612336551

Comments: HEARTS & ARROWS
This Laboratory Grown Diamond was created by Chemical Vapor Deposition (CVD) growth process and may include post-growth treatment. Type IIa



Summary table of report details: Date, Report No, Shape, Carat Weight, Color Grade, Clarity Grade, Depth, Table, Girdle, Cut, Polish, Symmetry, Fluorescence, Inscription(s).

Comments: HEARTS & ARROWS
This Laboratory Grown Diamond was created by Chemical Vapor Deposition (CVD) growth process and may include post-growth treatment. Type IIa