

ELECTRONIC COPY

LABORATORY GROWN DIAMOND REPORT

December 16, 2023	
IGI Report Number	LG612339155
Description	LABORATORY GROWN DIAMOND
Shape and Cutting Style	CUT CORNERED RECTANGULAR MODIFIED BRILLIANT
Measurements	7.07 X 4.77 X 3.26 MM

GRADING RESULTS

Carat Weight	0.96 CARAT
Color Grade	E
Clarity Grade	VVS 2

ADDITIONAL GRADING INFORMATION

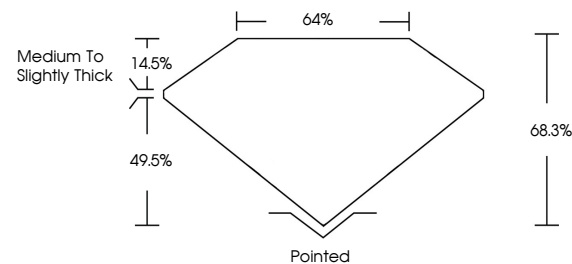
Polish	EXCELLENT
Symmetry	EXCELLENT
Fluorescence	NONE
Inscription(s)	 LG612339155

Comments: This Laboratory Grown Diamond was created by Chemical Vapor Deposition (CVD) growth process and may include post-growth treatment.
Type IIa

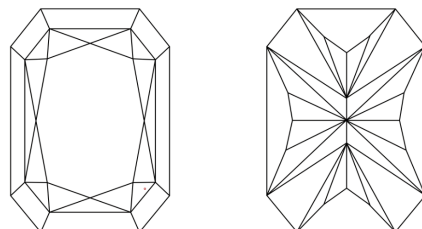
LABORATORY GROWN DIAMOND REPORT

LG612339155
Report verification at lgi.org

PROPORTIONS



CLARITY CHARACTERISTICS



KEY TO SYMBOLS

Red symbols indicate internal characteristics.
Green symbols indicate external characteristics.

LABORATORY GROWN
DIAMOND REPORT

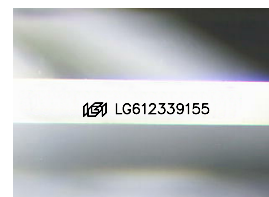
GRADING SCALES

CLARITY

IF	VVS ¹⁻²	VS ¹⁻²	SI ¹⁻²	I ¹⁻³
Internally Flawless	Very Very Slightly Included	Very Slightly Included	Slightly Included	Included

COLOR

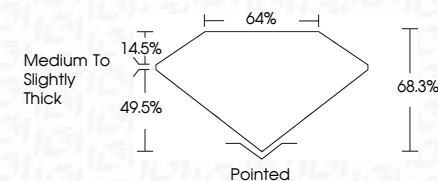
D E F G H I J Faint Very Light Light




Sample Image Used

LABORATORY GROWN DIAMOND REPORT

December 16, 2023	
IGI Report Number	LG612339155
Description	LABORATORY GROWN DIAMOND
Shape and Cutting Style	CUT CORNERED RECTANGULAR MODIFIED BRILLIANT
Measurements	7.07 X 4.77 X 3.26 MM
GRADING RESULTS	
Carat Weight	0.96 CARAT
Color Grade	E
Clarity Grade	VVS 2



ADDITIONAL GRADING INFORMATION

Polish	EXCELLENT
Symmetry	EXCELLENT
Fluorescence	NONE
Inscription(s)	 LG612339155
<p>Comments: This Laboratory Grown Diamond was created by Chemical Vapor Deposition (CVD) growth process and may include post-growth treatment.</p> <p>Type IIa</p>	



IG



© IGI 2020, International Gemological Institute

FD - 10 20

December 16, 2023	0.07 X 0.477 X 3.26 MM	0.0% CARAT	VS 2	68.3%	64%	Medium to Slightly Thick	Polished	Excellent	None	gem/24793015
GI CORNERED RECT, MODIFIED BRILLIANT	Color Weight	Color Grade	Clarity Grade	Depth	Table	Grade	Culet	Polish	Symmetry	Fluorescence

Comments:
This Laboratory Grown Diamond was created by Chemical Vapor Deposition (CVD) growth process and may include post-growth treatment.