



**ELECTRONIC COPY**

LG613355961

Report verification at [igi.org](http://igi.org)

**LABORATORY GROWN DIAMOND REPORT**

December 21, 2023  
 IGI Report Number **LG613355961**  
 Description **LABORATORY GROWN  
DIAMOND**  
 Shape and Cutting Style **ROUND BRILLIANT**  
 Measurements **10.88 - 10.93 X 6.80 MM**

**GRADING RESULTS**

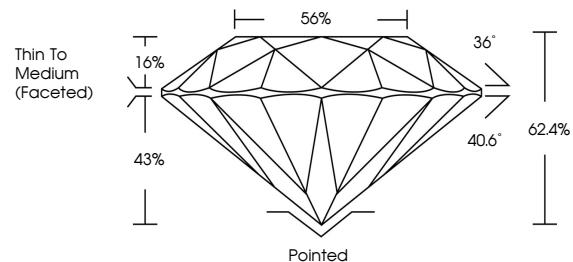
Carat Weight **5.02 CARATS**  
 Color Grade **H**  
 Clarity Grade **VVS 2**  
 Cut Grade **IDEAL**

**ADDITIONAL GRADING INFORMATION**

Polish **EXCELLENT**  
 Symmetry **EXCELLENT**  
 Fluorescence **NONE**  
 Inscription(s) **IGI LG613355961**

Comments: This Laboratory Grown Diamond was created by Chemical Vapor Deposition (CVD) growth process and may include post-growth treatment. Type IIa

**PROPORTIONS**



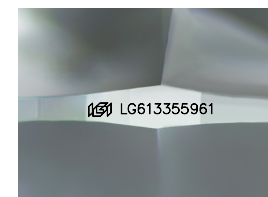
**GRADING SCALES**

**CLARITY**

| IF                  | VVS <sup>1-2</sup>          | VS <sup>1-2</sup>      | SI <sup>1-2</sup> | I <sup>1-3</sup> |
|---------------------|-----------------------------|------------------------|-------------------|------------------|
| Internally Flawless | Very Very Slightly Included | Very Slightly Included | Slightly Included | Included         |

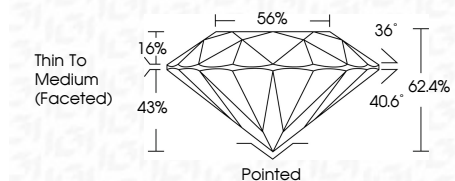
**COLOR**

| D | E | F | G | H | I | J | Faint | Very Light | Light |
|---|---|---|---|---|---|---|-------|------------|-------|
|---|---|---|---|---|---|---|-------|------------|-------|



Sample Image Used

December 21, 2023  
 IGI Report Number **LG613355961**  
 Description **LABORATORY GROWN  
DIAMOND**  
 Shape and Cutting Style **ROUND BRILLIANT**  
 Measurements **10.88 - 10.93 X 6.80 MM**  
**GRADING RESULTS**  
 Carat Weight **5.02 CARATS**  
 Color Grade **H**  
 Clarity Grade **VVS 2**  
 Cut Grade **IDEAL**



**ADDITIONAL GRADING INFORMATION**

Polish **EXCELLENT**  
 Symmetry **EXCELLENT**  
 Fluorescence **NONE**  
 Inscription(s) **IGI LG613355961**  
 Comments: This Laboratory Grown Diamond was created by Chemical Vapor Deposition (CVD) growth process and may include post-growth treatment. Type IIa



|                   |                           |                 |             |       |       |        |       |        |                          |              |                |   |      |                 |
|-------------------|---------------------------|-----------------|-------------|-------|-------|--------|-------|--------|--------------------------|--------------|----------------|---|------|-----------------|
| December 21, 2023 | IGI Report No LG613355961 | ROUND BRILLIANT | 5.02 CARATS | H     | VVS 2 | IDEAL  | 62.4% | 56%    | Thin To Medium (Faceted) | Pointed      | EXCELLENT      | EXCELLENT   | NONE | IGI LG613355961 |
| Carat Weight      | Color Grade               | Clarity Grade   | Cut Grade   | Depth | Table | Girdle | Culet | Polish | Symmetry                 | Fluorescence | Inscription(s) | Comments: This Laboratory Grown Diamond was created by Chemical Vapor Deposition (CVD) growth process and may include post-growth treatment. Type IIa |      |                 |