



ELECTRONIC COPY

LG613361224

Report verification at igi.org

LABORATORY GROWN DIAMOND REPORT

December 22, 2023
 IGI Report Number **LG613361224**
 Description **LABORATORY GROWN
DIAMOND**
 Shape and Cutting Style **ROUND BRILLIANT**
 Measurements **9.89 - 9.93 X 5.86 MM**

GRADING RESULTS

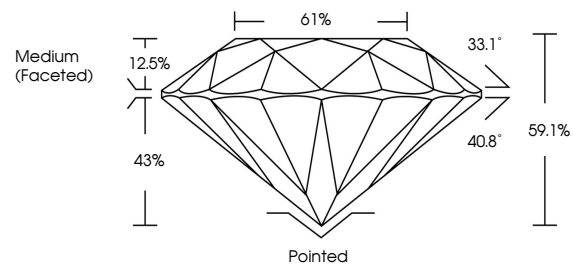
Carat Weight **3.51 CARATS**
 Color Grade **F**
 Clarity Grade **VS 2**
 Cut Grade **EXCELLENT**

ADDITIONAL GRADING INFORMATION

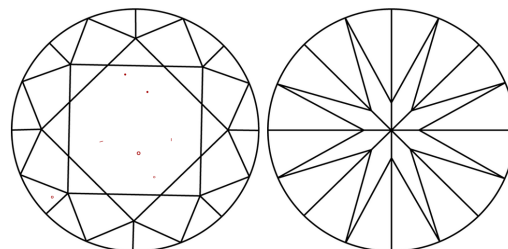
Polish **EXCELLENT**
 Symmetry **EXCELLENT**
 Fluorescence **NONE**
 Inscription(s) **IGI LG613361224**

Comments: This Laboratory Grown Diamond was created by Chemical Vapor Deposition (CVD) growth process and may include post-growth treatment. Type IIa

PROPORTIONS



CLARITY CHARACTERISTICS



KEY TO SYMBOLS

Red symbols indicate internal characteristics.
 Green symbols indicate external characteristics.

GRADING SCALES

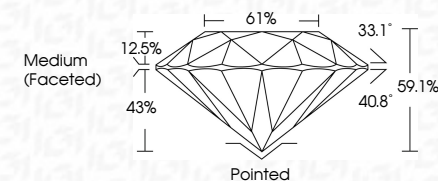
CLARITY

| IF | VVS ¹⁻² | VS ¹⁻² | SI ¹⁻² | I ¹⁻³ |
|---------------------|-----------------------------|------------------------|-------------------|------------------|
| Internally Flawless | Very Very Slightly Included | Very Slightly Included | Slightly Included | Included |

COLOR

| D | E | F | G | H | I | J | Faint | Very Light | Light |
|---|---|---|---|---|---|---|-------|------------|-------|
|---|---|---|---|---|---|---|-------|------------|-------|

December 22, 2023
 IGI Report Number **LG613361224**
 Description **LABORATORY GROWN
DIAMOND**
 Shape and Cutting Style **ROUND BRILLIANT**
 Measurements **9.89 - 9.93 X 5.86 MM**
GRADING RESULTS
 Carat Weight **3.51 CARATS**
 Color Grade **F**
 Clarity Grade **VS 2**
 Cut Grade **EXCELLENT**



ADDITIONAL GRADING INFORMATION

Polish **EXCELLENT**
 Symmetry **EXCELLENT**
 Fluorescence **NONE**
 Inscription(s) **IGI LG613361224**
 Comments: This Laboratory Grown Diamond was created by Chemical Vapor Deposition (CVD) growth process and may include post-growth treatment. Type IIa



Sample Image Used



IGI

December 22, 2023
 IGI Report No LG613361224
ROUND BRILLIANT
 9.89 - 9.93 X 5.86 MM
 3.51 CARATS
 F
 VS 2
 EXCELLENT
 61%
 61%
 Medium (Faceted)
 Pointed
 EXCELLENT
 EXCELLENT
 NONE
 IGI LG613361224
 Comments: This Laboratory Grown Diamond was created by Chemical Vapor Deposition (CVD) growth process and may include post-growth treatment. Type IIa