

ELECTRONIC COPY

LABORATORY GROWN DIAMOND REPORT

January 20, 2024	
IGI Report Number	LG613372938
Description	LABORATORY GROWN DIAMOND
Shape and Cutting Style	ROUND BRILLIANT
Measurements	6.96 - 6.99 X 4.24 MM

GRADING RESULTS

Carat Weight	1.27 CARAT
Color Grade	E
Clarity Grade	VVS 1
Cut Grade	IDEAL

ADDITIONAL GRADING INFORMATION

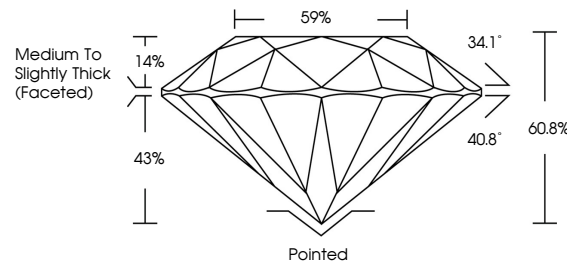
Polish	EXCELLENT
Symmetry	EXCELLENT
Fluorescence	NONE
Inscription(s)	LG613372938

Comments: As Grown - No indication of post-growth treatment.
This Laboratory Grown Diamond was created by High Pressure High Temperature (HPHT) growth process.
Type II

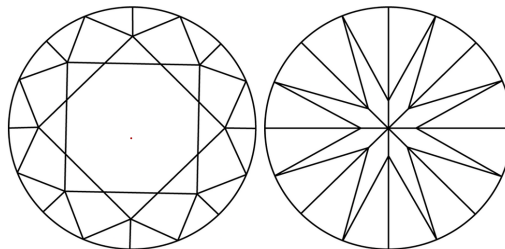
LABORATORY GROWN DIAMOND REPORT

LG613372938
Report verification at igi.org

PROPORTIONS



CLARITY CHARACTERISTICS



KEY TO SYMBOLS

Red symbols indicate internal characteristics.
Green symbols indicate external characteristics.

LABORATORY GROWN
DIAMOND REPORT

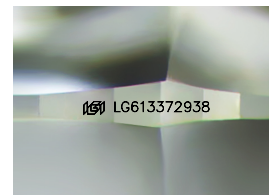
GRADING SCALES

CLARITY

IF	VVS ¹⁻²	VS ¹⁻²	SI ¹⁻²	I ¹⁻³
Internally Flawless	Very Very Slightly Included	Very Slightly Included	Slightly Included	Included

COLOR

D E F G H I J Faint Very Light Light



Sample Image Used



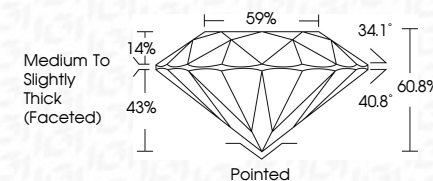
© IGI 2020, International Gemological Institute

FD - 10 20

LABORATORY GROWN DIAMOND REPORT

January 20, 2024	
IGI Report Number	LG613372938
Description	LABORATORY GROWN DIAMOND
Shape and Cutting Style	ROUND BRILLIANT
Measurements	6.96 - 6.99 X 4.24 MM

GRADING RESULTS	
Carat Weight	1.27 CARAT
Color Grade	E
Clarity Grade	VVS 1
Cut Grade	IDEAL



ADDITIONAL GRADING INFORMATION

Polish	EXCELLENT
Symmetry	EXCELLENT
Fluorescence	NONE
Inscription(s)	LG6 LG613372938
Comments: As Grown - No indication of post-growth treatment.	
This Laboratory Grown Diamond was created by High Pressure High Temperature (HPHT) growth process.	
Type II	



January 20, 2024	GI Report No LG613372938	
ROUND BRILLIANT	1.27 CARAT	
95.95 - 6.99 X 4.24 MM		
Color	Color Grade	VVS 1
Clarity	Clarity Grade	IDEAL
Cut	Cut Grade	60.6%
Table	Table Grade	59%
Girdle	Girdle Grade	Medium to Slightly Thick (Face0)
Culet	Culet	Pointed
Polish	Polish	EXCELLENT
Symmetry	Symmetry	EXCELLENT
Fluorescence	Fluorescence	NONE
Inscriptions(s)	Inscriptions(s)	4681 LG613372938
Comments:	No indication of post-growth treatment.	
	The Laboratory Growth Diamond was created by High Pressure Diamond Type II	