



ELECTRONIC COPY

LABORATORY GROWN DIAMOND REPORT

December 23, 2023
 IGI Report Number **LG613378727**
 Description **LABORATORY GROWN
DIAMOND**
 Shape and Cutting Style **CUT CORNERED RECTANGULAR
MODIFIED BRILLIANT**
 Measurements **9.77 X 6.64 X 4.40 MM**

GRADING RESULTS

Carat Weight **2.47 CARATS**
 Color Grade **H**
 Clarity Grade **SI 1**

ADDITIONAL GRADING INFORMATION

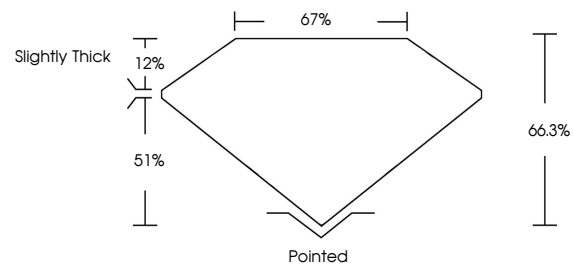
Polish **EXCELLENT**
 Symmetry **EXCELLENT**
 Fluorescence **NONE**
 Inscription(s) **IGI LG613378727**

Comments: This Laboratory Grown Diamond was created by Chemical Vapor Deposition (CVD) growth process and may include post-growth treatment. Type IIa

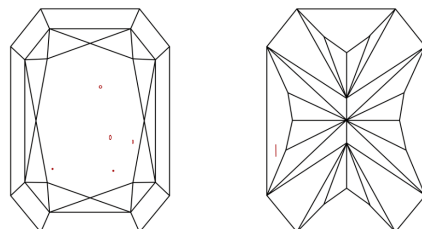
LABORATORY GROWN DIAMOND REPORT

LG613378727
 Report verification at igi.org

PROPORTIONS



CLARITY CHARACTERISTICS



KEY TO SYMBOLS

Red symbols indicate internal characteristics.
 Green symbols indicate external characteristics.

**LABORATORY GROWN
DIAMOND REPORT**

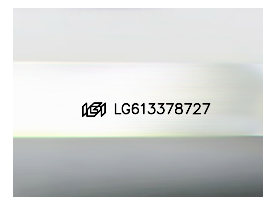
GRADING SCALES

CLARITY

IF	VVS ¹⁻²	VS ¹⁻²	SI ¹⁻²	I ¹⁻³
Internally Flawless	Very Very Slightly Included	Very Slightly Included	Slightly Included	Included

COLOR

D	E	F	G	H	I	J	Faint	Very Light	Light
---	---	---	---	---	---	---	-------	------------	-------



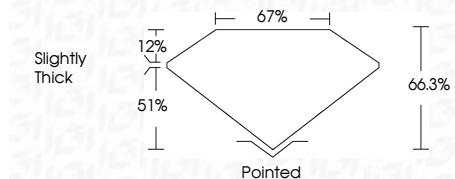
Sample Image Used

LABORATORY GROWN DIAMOND REPORT

December 23, 2023
 IGI Report Number **LG613378727**
 Description **LABORATORY GROWN
DIAMOND**
 Shape and Cutting Style **CUT CORNERED
RECTANGULAR MODIFIED
BRILLIANT**
 Measurements **9.77 X 6.64 X 4.40 MM**

GRADING RESULTS

Carat Weight **2.47 CARATS**
 Color Grade **H**
 Clarity Grade **SI 1**



ADDITIONAL GRADING INFORMATION

Polish **EXCELLENT**
 Symmetry **EXCELLENT**
 Fluorescence **NONE**
 Inscription(s) **IGI LG613378727**
 Comments: This Laboratory Grown Diamond was created by Chemical Vapor Deposition (CVD) growth process and may include post-growth treatment. Type IIa



December 23, 2023
 IGI Report No **LG613378727**
CUT CORNERED RECT. MODIFIED BRILLIANT
9.77 X 6.64 X 4.40 MM
 Carat Weight **2.47 CARATS**
 Color Grade **H**
 Clarity Grade **SI 1**
 Depth **66.3%**
 Table **67%**
 Girdle **Slightly Thick**
 Culet **Pointed**
 Polish **EXCELLENT**
 Symmetry **EXCELLENT**
 Fluorescence **NONE**
 Inscription(s) **IGI LG613378727**
 Comments: This Laboratory Grown Diamond was created by Chemical Vapor Deposition (CVD) growth process and may include post-growth treatment. Type IIa