



**ELECTRONIC COPY**

LG613393047

Report verification at [igi.org](http://igi.org)

**LABORATORY GROWN DIAMOND REPORT**

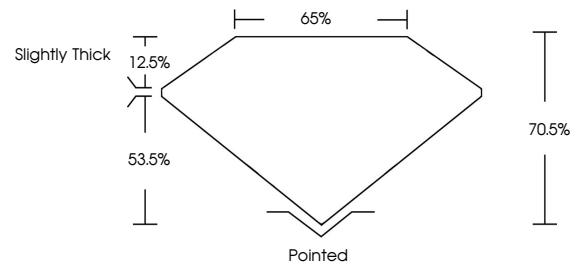
December 26, 2023  
 IGI Report Number **LG613393047**  
 Description **LABORATORY GROWN  
DIAMOND**  
 Shape and Cutting Style **PRINCESS CUT**  
 Measurements **10.96 X 10.84 X 7.64 MM**  
**GRADING RESULTS**  
 Carat Weight **8.11 CARATS**  
 Color Grade **G**  
 Clarity Grade **VS 1**

**ADDITIONAL GRADING INFORMATION**

Polish **EXCELLENT**  
 Symmetry **EXCELLENT**  
 Fluorescence **NONE**  
 Inscription(s) **IGI LG613393047**

Comments: This Laboratory Grown Diamond was created by Chemical Vapor Deposition (CVD) growth process and may include post-growth treatment. Type IIa

**PROPORTIONS**



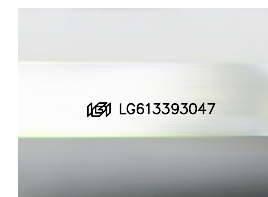
**GRADING SCALES**

**CLARITY**

IF	VVS <sup>1-2</sup>	VS <sup>1-2</sup>	SI <sup>1-2</sup>	I <sup>1-3</sup>
Internally Flawless	Very Very Slightly Included	Very Slightly Included	Slightly Included	Included

**COLOR**

D	E	F	G	H	I	J	Faint	Very Light	Light
---	---	---	---	---	---	---	-------	------------	-------

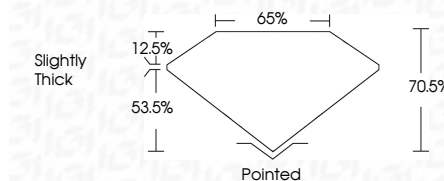


Sample Image Used

December 26, 2023  
 IGI Report Number **LG613393047**  
 Description **LABORATORY GROWN  
DIAMOND**  
 Shape and Cutting Style **PRINCESS CUT**  
 Measurements **10.96 X 10.84 X 7.64 MM**  
**GRADING RESULTS**  
 Carat Weight **8.11 CARATS**  
 Color Grade **G**  
 Clarity Grade **VS 1**

**ADDITIONAL GRADING INFORMATION**

Polish **EXCELLENT**  
 Symmetry **EXCELLENT**  
 Fluorescence **NONE**  
 Inscription(s) **IGI LG613393047**  
 Comments: This Laboratory Grown Diamond was created by Chemical Vapor Deposition (CVD) growth process and may include post-growth treatment. Type IIa



**IGI**

December 26, 2023  
 IGI Report No LG613393047  
**PRINCESS CUT**  
 10.96 X 10.84 X 7.64 MM  
 Carat Weight **8.11 CARATS**  
 Color Grade **G**  
 Clarity Grade **VS 1**  
 Table **70.5%**  
 Girdle **65%**  
 Slightly Thick  
 Culet **Pointed**  
 Polish **EXCELLENT**  
 Symmetry **EXCELLENT**  
 Fluorescence **NONE**  
 Inscription(s) **IGI LG613393047**  
 Comments: This Laboratory Grown Diamond was created by Chemical Vapor Deposition (CVD) growth process and may include post-growth treatment. Type IIa