

**ELECTRONIC COPY**

## LABORATORY GROWN DIAMOND REPORT

|                         |                             |
|-------------------------|-----------------------------|
| January 2, 2024         |                             |
| IGI Report Number       | LG614301618                 |
| Description             | LABORATORY GROWN<br>DIAMOND |
| Shape and Cutting Style | PRINCESS CUT                |
| Measurements            | 8.05 X 7.67 X 5.19 MM       |

## GRADING RESULTS

|               |                  |
|---------------|------------------|
| Carat Weight  | 3.01 CARATS      |
| Color Grade   | FANCY VIVID PINK |
| Clarity Grade | SI 1             |

### ADDITIONAL GRADING INFORMATION

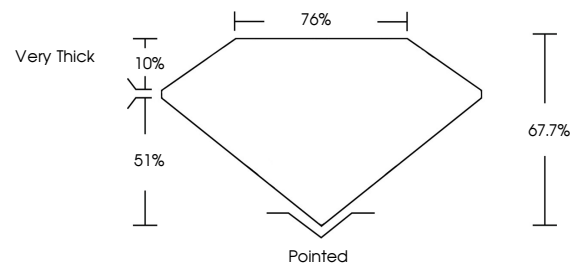
|                |   |
|----------------|---|
| Polish         | EXCELLENT   |
| Symmetry       | EXCELLENT   |
| Fluorescence   | SLIGHT  |
| Inscription(s) |  LG614301618 |

Comments: This Laboratory Grown Diamond was created by Chemical Vapor Deposition (CVD) growth process.  
Indications of post-growth treatment.

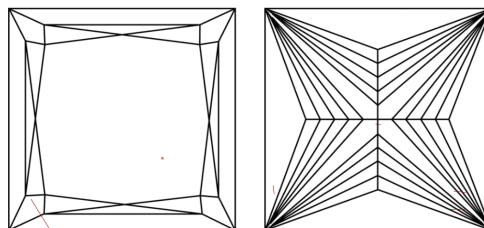
## LABORATORY GROWN DIAMOND REPORT

LG614301618  
Report verification at [igi.org](https://igi.org)

## PROPORTIONS



## CLARITY CHARACTERISTICS



### KEY TO SYMBOLS

Red symbols indicate internal characteristics.  
Green symbols indicate external characteristics.

LABORATORY GROWN  
DIAMOND REPORT

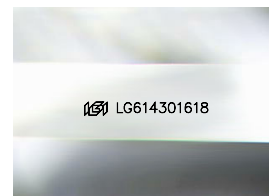
## GRADING SCALES

## CLARITY

| IF                     | VVS <sup>1-2</sup>             | VS <sup>1-2</sup>         | SI <sup>1-2</sup>    | I <sup>1-3</sup> |
|------------------------|--------------------------------|---------------------------|----------------------|------------------|
| Internally<br>Flawless | Very Very<br>Slightly Included | Very<br>Slightly Included | Slightly<br>Included | Included         |

**COLOR**

|            |   |   |             |   |   |       |               |             |       |
|------------|---|---|-------------|---|---|-------|---------------|-------------|-------|
| D          | E | F | G           | H | I | J     | Faint         | Very Light  | Light |
| Light Tint |   |   | Fancy Light |   |   | Fancy | Fancy Intense | Fancy Vivid |       |



Sample Image Used



© IGI 2020, International Gemological Institute

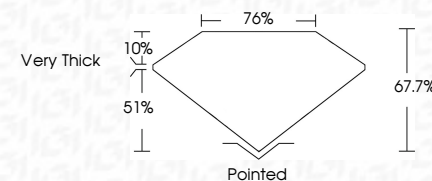
FD - 10 20



THIS DOCUMENT WAS PRODUCED WITH THE FOLLOWING SECURITY MEASURES: SPECIAL DOCUMENT PAPER, INK SCREENS, WATERMARK, BACKGROUND DESIGNS, HOLOGRAM AND OTHER SECURITY FEATURES NOT LISTED AND DO EXCEED DOCUMENT SECURITY INDUSTRY GUIDELINES

## LABORATORY GROWN DIAMOND REPORT

|                         |                             |
|-------------------------|-----------------------------|
| January 2, 2024         |                             |
| IGI Report Number       | LG614301618                 |
| Description             | LABORATORY GROWN<br>DIAMOND |
| Shape and Cutting Style | PRINCESS CUT                |
| Measurements            | 8.05 X 7.67 X 5.19 MM       |
| <b>GRADING RESULTS</b>  |                             |
| Carat Weight            | 3.01 CARATS                 |
| Color Grade             | FANCY VIVID PINK            |
| Clarity Grade           | SI 1                        |



### ADDITIONAL GRADING INFORMATION

|  |   |
|--|---|
| Polish   | EXCELLENT   |
| Symmetry   | EXCELLENT   |
| Fluorescence   | SLIGHT  |
| Inscription(s)   |  LG614301618 |
| <p>Comments: This Laboratory Grown Diamond was created by Chemical Vapor Deposition (CVD) growth process.</p> <p>Indications of post-growth treatment.</p> |   |



IG

January 2, 2024  
 IGI Report No LG614301618  
 PRINCESS CLIT

|                       |                   |                  |
|-----------------------|-------------------|------------------|
| 3.05 X 7.67 X 5.19 MM |                   | 3.01 CARATS      |
| Carat Weight          |                   | FANCY VIVID PINK |
| Color Grade           |                   |                  |
| Clarity Grade         | S11               |                  |
| Depth                 | 67.7%             |                  |
| Table                 | 76%               |                  |
| Girdle                | Very Thick        |                  |
| Culet                 | Pointed           |                  |
| Polish                | EXCELLENT         |                  |
| Symmetry              | EXCELLENT         |                  |
| Fluorescence          | SLIGHT            |                  |
| Annotations(s)        | Serial G414301618 |                  |

**Comments:**  
This Laboratory Grown Diamond was created by Chemical Vapor Deposition (CVD) growth process.  
millions of post-growth treatment