



ELECTRONIC COPY

LG614337140

Report verification at igi.org

LABORATORY GROWN DIAMOND REPORT

December 31, 2023
IGI Report Number **LG614337140**

Description **LABORATORY GROWN
DIAMOND**

Shape and Cutting Style **PRINCESS CUT**

Measurements **5.97 X 5.97 X 4.27 MM**

GRADING RESULTS

Carat Weight **1.37 CARAT**

Color Grade **E**

Clarity Grade **VVS 2**

ADDITIONAL GRADING INFORMATION

Polish **EXCELLENT**

Symmetry **EXCELLENT**

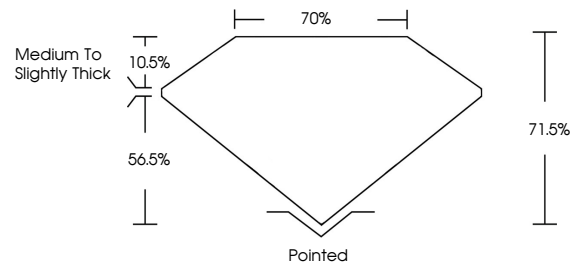
Fluorescence **NONE**

Inscription(s) **IGI LG614337140**

Comments: As Grown - No indication of post-growth treatment.

This Laboratory Grown Diamond was created by High Pressure High Temperature (HPHT) growth process. Type II

PROPORTIONS



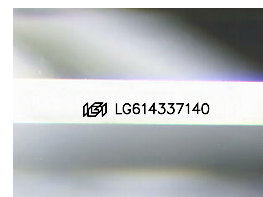
GRADING SCALES

CLARITY

IF	VVS ¹⁻²	VS ¹⁻²	SI ¹⁻²	I ¹⁻³
Internally Flawless	Very Very Slightly Included	Very Slightly Included	Slightly Included	Included

COLOR

D	E	F	G	H	I	J	Faint	Very Light	Light
---	---	---	---	---	---	---	-------	------------	-------



Sample Image Used

December 31, 2023

IGI Report Number **LG614337140**

Description **LABORATORY GROWN
DIAMOND**

Shape and Cutting Style **PRINCESS CUT**

Measurements **5.97 X 5.97 X 4.27 MM**

GRADING RESULTS

Carat Weight **1.37 CARAT**

Color Grade **E**

Clarity Grade **VVS 2**

ADDITIONAL GRADING INFORMATION

Polish **EXCELLENT**

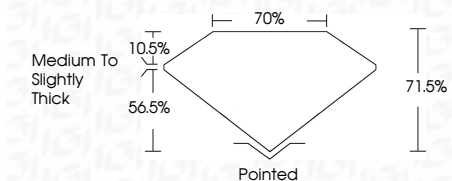
Symmetry **EXCELLENT**

Fluorescence **NONE**

Inscription(s) **IGI LG614337140**

Comments: As Grown - No indication of post-growth treatment.

This Laboratory Grown Diamond was created by High Pressure High Temperature (HPHT) growth process. Type II



IGI

December 31, 2023	1.37 CARAT	E	VVS 2	71.6%	70%	Medium to Slightly Thick	Pointed
IGI Report No LG614337140	5.97 X 5.97 X 4.27 MM	PRINCESS CUT	Color Grade	Depth	Table	Graile	Culet
			EXCELLENT	EXCELLENT	EXCELLENT	EXCELLENT	EXCELLENT
			None	None	None	None	None
			IGI LG614337140				

Comments: As Grown - No indication of post-growth treatment. This Laboratory Grown Diamond was created by High Pressure High Temperature (HPHT) growth process. Type II