



ELECTRONIC COPY

LG614338370

Report verification at igi.org

LABORATORY GROWN DIAMOND REPORT

December 30, 2023
 IGI Report Number **LG614338370**
 Description **LABORATORY GROWN
DIAMOND**
 Shape and Cutting Style **PRINCESS CUT**
 Measurements **7.95 X 7.86 X 5.63 MM**

GRADING RESULTS

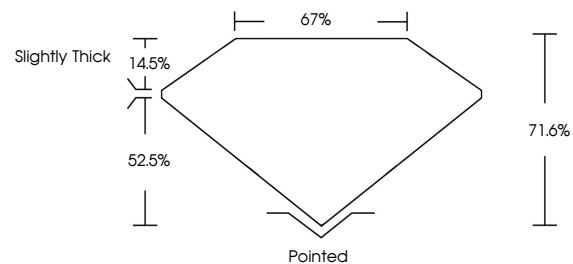
Carat Weight **3.32 CARATS**
 Color Grade **I**
 Clarity Grade **VS 2**

ADDITIONAL GRADING INFORMATION

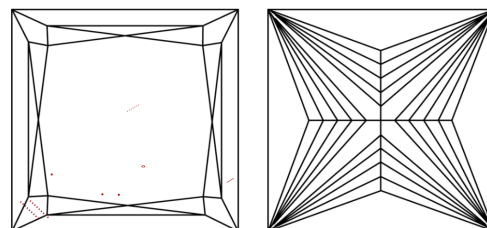
Polish **EXCELLENT**
 Symmetry **EXCELLENT**
 Fluorescence **NONE**
 Inscription(s) **IGI LG614338370**

Comments: This Laboratory Grown Diamond was created by Chemical Vapor Deposition (CVD) growth process and may include post-growth treatment. Type IIa

PROPORTIONS



CLARITY CHARACTERISTICS



KEY TO SYMBOLS

Red symbols indicate internal characteristics.
 Green symbols indicate external characteristics.

GRADING SCALES

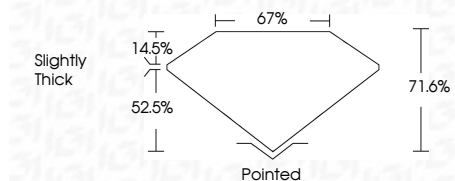
CLARITY

IF	VVS ¹⁻²	VS ¹⁻²	SI ¹⁻²	I ¹⁻³
Internally Flawless	Very Very Slightly Included	Very Slightly Included	Slightly Included	Included

COLOR

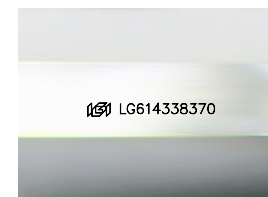
D	E	F	G	H	I	J	Faint	Very Light	Light
---	---	---	---	---	---	---	-------	------------	-------

December 30, 2023
 IGI Report Number **LG614338370**
 Description **LABORATORY GROWN
DIAMOND**
 Shape and Cutting Style **PRINCESS CUT**
 Measurements **7.95 X 7.86 X 5.63 MM**
GRADING RESULTS
 Carat Weight **3.32 CARATS**
 Color Grade **I**
 Clarity Grade **VS 2**



ADDITIONAL GRADING INFORMATION

Polish **EXCELLENT**
 Symmetry **EXCELLENT**
 Fluorescence **NONE**
 Inscription(s) **IGI LG614338370**
 Comments: This Laboratory Grown Diamond was created by Chemical Vapor Deposition (CVD) growth process and may include post-growth treatment. Type IIa



Sample Image Used



IGI

December 30, 2023
 IGI Report No LG614338370
PRINCESS CUT
 7.95 X 7.86 X 5.63 MM
 3.32 CARATS
 Color Grade **I**
 Clarity Grade **VS 2**
 Depth **71.6%**
 Table **67%**
 Girdle **Slightly Thick**
 Culet **Pointed**
 Polish **EXCELLENT**
 Symmetry **EXCELLENT**
 Fluorescence **NONE**
 Inscription(s) **IGI LG614338370**

Comments: This Laboratory Grown Diamond was created by Chemical Vapor Deposition (CVD) growth process and may include post-growth treatment. Type IIa