

ELECTRONIC COPY

LABORATORY GROWN DIAMOND REPORT

January 2, 2024	
IGI Report Number	LG615341146
Description	LABORATORY GROWN DIAMOND
Shape and Cutting Style	ROUND BRILLIANT
Measurements	10.15 - 10.20 X 6.12 MM

GRADING RESULTS

Carat Weight	3.82 CARATS
Color Grade	G
Clarity Grade	SI 1
Cut Grade	IDEAL

ADDITIONAL GRADING INFORMATION

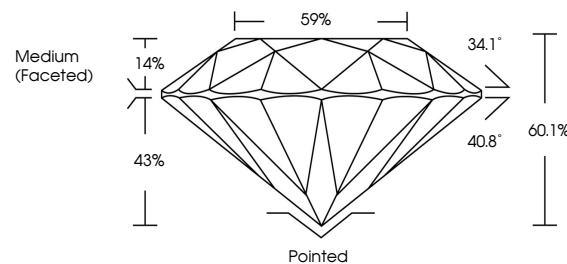
Polish	EXCELLENT
Symmetry	EXCELLENT
Fluorescence	NONE
Inscription(s)	15 LG615341146

Comments: This Laboratory Grown Diamond was created by Chemical Vapor Deposition (CVD) growth process and may include post-growth treatment.
Type IIa

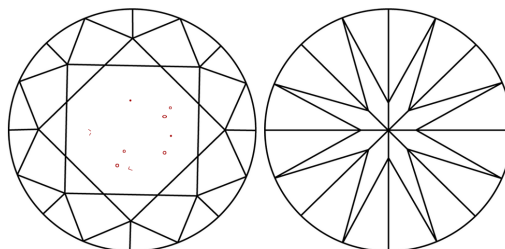
LABORATORY GROWN DIAMOND REPORT

LG615341146
Report verification at lgi.org

PROPORTIONS



CLARITY CHARACTERISTICS



KEY TO SYMBOLS

Red symbols indicate internal characteristics.
Green symbols indicate external characteristics.

LABORATORY GROWN
DIAMOND REPORT

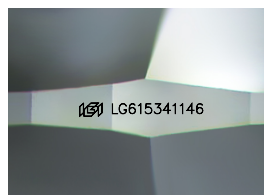
GRADING SCALES

CLARITY

IF	VVS ¹⁻²	VS ¹⁻²	SI ¹⁻²	I ¹⁻³
Internally Flawless	Very Very Slightly Included	Very Slightly Included	Slightly Included	Included

COLOR

D E F G H I J Faint Very Light Light



Sample Image Used



© IGI 2020, International Gemological Institute

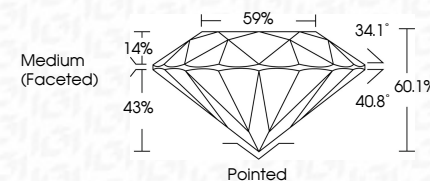
FD - 10 20

LABORATORY GROWN DIAMOND REPORT

January 2, 2024	
IGI Report Number	LG615341146
Description	LABORATORY GROWN DIAMOND
Shape and Cutting Style	ROUND BRILLIANT
Measurements	10.15 - 10.20 X 6.12 MM

GRADING RESULTS

Carat Weight	3.82 CARATS
Color Grade	G
Clarity Grade	SI 1
Cut Grade	IDEAL



ADDITIONAL GRADING INFORMATION

Polish	EXCELLENT
Symmetry	EXCELLENT
Fluorescence	NONE
Inscription(s)	 LG615341146

Comments: This Laboratory Grown Diamond was created by Chemical Vapor Deposition (CVD) growth process and may include post-growth treatment.
Type IIa



January 2, 2024	
GI Report No. 15615341146	
ROUND BELLANT	
10.15 - 10.20 X 4.12 MM	
Carat Weight	3.82 CARATS
Color Grade	G
Clarity Grade	S I
Cut Grade	IDEAL
Depth	60.1%
Table	59%
Grade	Medium (Faceted)
Cluef	Portined
Polish	EXCELLENT
Symmetry	EXCELLENT
Fluorescence	NONE
Inscriptions(s)	15615615341146
Comments:	
	Created by Chemex Diamond was treated by Chemical Vapor Deposition (CVD) growth process and may include post-growth treatment.
	Type IIa