



**ELECTRONIC COPY**

**LABORATORY GROWN DIAMOND REPORT**

January 2, 2024  
 IGI Report Number **LG615346725**  
 Description **LABORATORY GROWN  
DIAMOND**  
 Shape and Cutting Style **ROUND BRILLIANT**  
 Measurements **9.73 - 9.79 X 6.22 MM**

**GRADING RESULTS**

Carat Weight **3.66 CARATS**  
 Color Grade **F**  
 Clarity Grade **SI 2**  
 Cut Grade **EXCELLENT**

**ADDITIONAL GRADING INFORMATION**

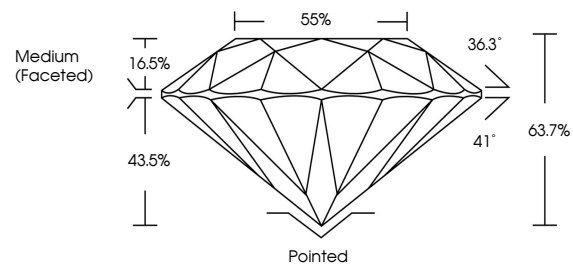
Polish **EXCELLENT**  
 Symmetry **EXCELLENT**  
 Fluorescence **NONE**  
 Inscription(s) **IGI LG615346725**

Comments: This Laboratory Grown Diamond was created by Chemical Vapor Deposition (CVD) growth process and may include post-growth treatment. Type IIa

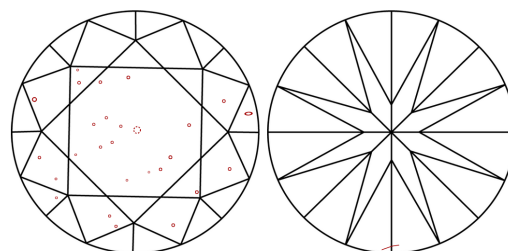
**LABORATORY GROWN DIAMOND REPORT**

**LG615346725**  
 Report verification at [igi.org](http://igi.org)

**PROPORTIONS**



**CLARITY CHARACTERISTICS**



**KEY TO SYMBOLS**

Red symbols indicate internal characteristics.  
 Green symbols indicate external characteristics.

**LABORATORY GROWN  
DIAMOND REPORT**

**GRADING SCALES**

**CLARITY**

IF	VVS <sup>1-2</sup>	VS <sup>1-2</sup>	SI <sup>1-2</sup>	I <sup>1-3</sup>
Internally Flawless	Very Very Slightly Included	Very Slightly Included	Slightly Included	Included

**COLOR**

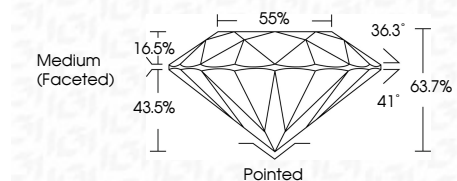
D	E	F	G	H	I	J	Faint	Very Light	Light
---	---	---	---	---	---	---	-------	------------	-------

**LABORATORY GROWN DIAMOND REPORT**

January 2, 2024  
 IGI Report Number **LG615346725**  
 Description **LABORATORY GROWN  
DIAMOND**  
 Shape and Cutting Style **ROUND BRILLIANT**  
 Measurements **9.73 - 9.79 X 6.22 MM**

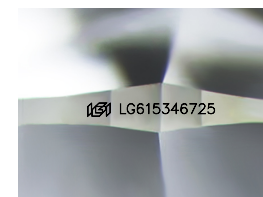
**GRADING RESULTS**

Carat Weight **3.66 CARATS**  
 Color Grade **F**  
 Clarity Grade **SI 2**  
 Cut Grade **EXCELLENT**



**ADDITIONAL GRADING INFORMATION**

Polish **EXCELLENT**  
 Symmetry **EXCELLENT**  
 Fluorescence **NONE**  
 Inscription(s) **IGI LG615346725**  
 Comments: This Laboratory Grown Diamond was created by Chemical Vapor Deposition (CVD) growth process and may include post-growth treatment. Type IIa



Sample Image Used



**IGI**

January 2, 2024  
 IGI Report No **LG615346725**  
**ROUND BRILLIANT**  
 9.73 - 9.79 X 6.22 MM  
 3.66 CARATS  
 Carat Weight  
 Color Grade **F**  
 Clarity Grade **SI 2**  
 Cut Grade **EXCELLENT**  
 Depth **63.7%**  
 Table **55%**  
 Girdle  
 Medium (Faceted)  
 Culet  
 Pointed  
 Polish **EXCELLENT**  
 Symmetry **EXCELLENT**  
 Fluorescence **NONE**  
 Inscription(s) **IGI LG615346725**  
 Comments: This Laboratory Grown Diamond was created by Chemical Vapor Deposition (CVD) growth process and may include post-growth treatment. Type IIa