

ELECTRONIC COPY

LABORATORY GROWN DIAMOND REPORT

January 3, 2024	
IGI Report Number	LG615346910
Description	LABORATORY GROWN DIAMOND
Shape and Cutting Style	PEAR BRILLIANT
Measurements	14.81 X 8.64 X 5.53 MM

GRADING RESULTS

Carat Weight	4.02 CARATS
Color Grade	F
Clarity Grade	SI 1

ADDITIONAL GRADING INFORMATION

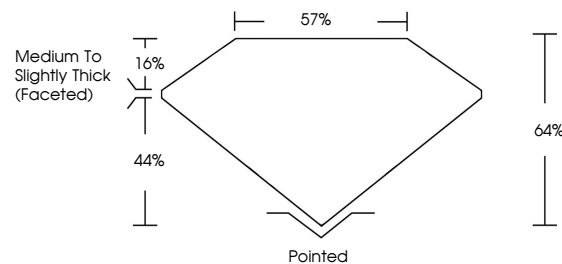
Polish	EXCELLENT
Symmetry	EXCELLENT
Fluorescence	NONE
Inscription(s)	LG615346910

Comments: This Laboratory Grown Diamond was created by Chemical Vapor Deposition (CVD) growth process and may include post-growth treatment.
Type IIa

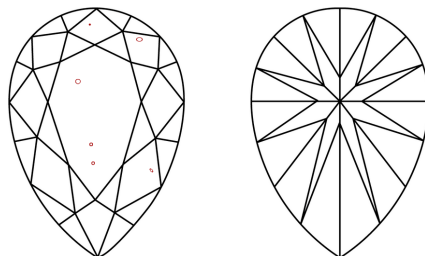
LABORATORY GROWN DIAMOND REPORT

LG615346910
Report verification at lgi.org

PROPORTIONS



CLARITY CHARACTERISTICS



KEY TO SYMBOLS

Red symbols indicate internal characteristics.
Green symbols indicate external characteristics.

LABORATORY GROWN
DIAMOND REPORT

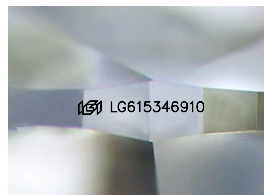
GRADING SCALES

CLARITY

IF	VVS ¹⁻²	VS ¹⁻²	SI ¹⁻²	I ¹⁻³
Internally Flawless	Very Very Slightly Included	Very Slightly Included	Slightly Included	Included

COLOR

D E F G H I J Faint Very Light Light



Sample Image Used

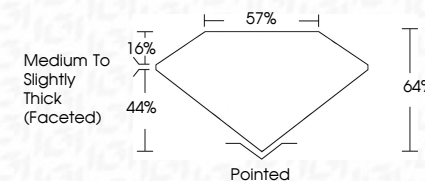


© IGI 2020, International Gemological Institute

FD - 10 20



January 3, 2024	
IGI Report Number	LG615346910
Description	LABORATORY GROWN DIAMOND
Shape and Cutting Style	PEAR BRILLIANT
Measurements	14.81 X 8.64 X 5.53 MM
GRADING RESULTS	
Carat Weight	4.02 CARATS
Color Grade	F
Clarity Grade	SI 1



ADDITIONAL GRADING INFORMATION

Polish	EXCELLENT
Symmetry	EXCELLENT
Fluorescence	NONE
Inscription(s)	(16) LG615346910

Comments: This Laboratory Grown Diamond was created by Chemical Vapor Deposition (CVD) growth process and may include post-growth treatment.
Type IIa

January 3, 2024	4.02 CARATS
GI Report No LG615349P10	
YEAR BRILLIANT	
14.81 X 8.64 X 5.63 MM	
Carat Weight	
Color Grade	
Clarity Grade	
Depth	
Table	
Grade	
Medium to Slightly Thick (Faceted)	
Culet	
Polish	
Symmetry	
Fluorescence	
Inscriptions	

Comments:
This Laboratory Grown Diamond was created by Chemical Vapor Deposition (CVD) growth process and may include post-growth treatment.