



ELECTRONIC COPY

LABORATORY GROWN DIAMOND REPORT

LG615349498
Report verification at igi.org

LABORATORY GROWN
DIAMOND REPORT

LABORATORY GROWN DIAMOND REPORT

LABORATORY GROWN DIAMOND REPORT

January 1, 2024
IGI Report Number **LG615349498**

Description **LABORATORY GROWN
DIAMOND**

Shape and Cutting Style **EMERALD CUT**

Measurements **7.71 X 5.44 X 3.71 MM**

GRADING RESULTS

Carat Weight **1.57 CARAT**

Color Grade **D**

Clarity Grade **VVS 2**

ADDITIONAL GRADING INFORMATION

Polish **EXCELLENT**

Symmetry **EXCELLENT**

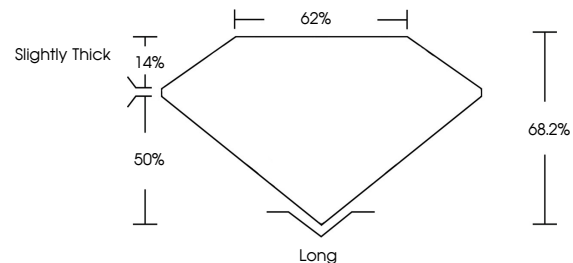
Fluorescence **NONE**

Inscription(s) **IGI LG615349498**

Comments: As Grown - No indication of post-growth treatment.

This Laboratory Grown Diamond was created by High Pressure High Temperature (HPHT) growth process. Type II

PROPORTIONS



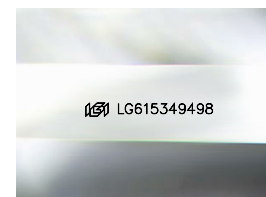
GRADING SCALES

CLARITY

IF	VVS ¹⁻²	VS ¹⁻²	SI ¹⁻²	I ¹⁻³
Internally Flawless	Very Very Slightly Included	Very Slightly Included	Slightly Included	Included

COLOR

D	E	F	G	H	I	J	Faint	Very Light	Light
---	---	---	---	---	---	---	-------	------------	-------



Sample Image Used

January 1, 2024

IGI Report Number **LG615349498**

Description **LABORATORY GROWN
DIAMOND**

Shape and Cutting Style **EMERALD CUT**

Measurements **7.71 X 5.44 X 3.71 MM**

GRADING RESULTS

Carat Weight **1.57 CARAT**

Color Grade **D**

Clarity Grade **VVS 2**

ADDITIONAL GRADING INFORMATION

Polish **EXCELLENT**

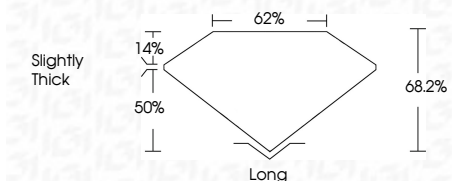
Symmetry **EXCELLENT**

Fluorescence **NONE**

Inscription(s) **IGI LG615349498**

Comments: As Grown - No indication of post-growth treatment.

This Laboratory Grown Diamond was created by High Pressure High Temperature (HPHT) growth process. Type II



IGI

January 1, 2024	IGI Report No LG615349498	EMERALD CUT	7.71 X 5.44 X 3.71 MM	1.57 CARAT	D	VVS 2	68.2%	62%	Slightly Thick	Long	EXCELLENT	EXCELLENT	NONE	IGI LG615349498
Color Grade	Clarity Grade	Table	Depth	Grades	Culet	Polish	Symmetry	Fluorescence	Inscription(s)	Comments: As Grown - No indication of post-growth treatment. This Laboratory Grown Diamond was created by High Pressure High Temperature (HPHT) growth process. Type II				