



ELECTRONIC COPY

LABORATORY GROWN DIAMOND REPORT

January 16, 2024
 IGI Report Number **LG615356745**
 Description **LABORATORY GROWN
DIAMOND**
 Shape and Cutting Style **CUT CORNERED RECTANGULAR
MODIFIED BRILLIANT**
 Measurements **10.49 X 6.83 X 4.44 MM**

GRADING RESULTS

Carat Weight **3.00 CARATS**
 Color Grade **D**
 Clarity Grade **VS 2**

ADDITIONAL GRADING INFORMATION

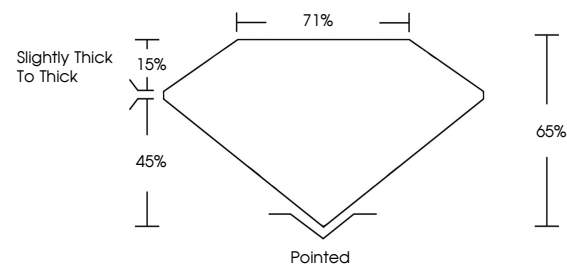
Polish **EXCELLENT**
 Symmetry **EXCELLENT**
 Fluorescence **NONE**
 Inscription(s) **IGI LG615356745**

Comments: This Laboratory Grown Diamond was created by Chemical Vapor Deposition (CVD) growth process and may include post-growth treatment. Type IIa

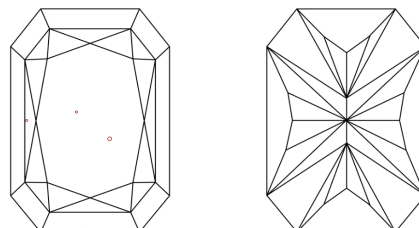
LABORATORY GROWN DIAMOND REPORT

LG615356745
 Report verification at igi.org

PROPORTIONS



CLARITY CHARACTERISTICS



KEY TO SYMBOLS

Red symbols indicate internal characteristics.
 Green symbols indicate external characteristics.

**LABORATORY GROWN
DIAMOND REPORT**

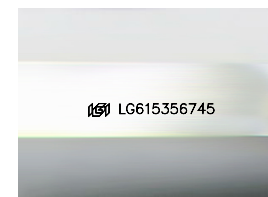
GRADING SCALES

CLARITY

IF	VVS ¹⁻²	VS ¹⁻²	SI ¹⁻²	I ¹⁻³
Internally Flawless	Very Very Slightly Included	Very Slightly Included	Slightly Included	Included

COLOR

D	E	F	G	H	I	J	Faint	Very Light	Light
---	---	---	---	---	---	---	-------	------------	-------



Sample Image Used

LABORATORY GROWN DIAMOND REPORT

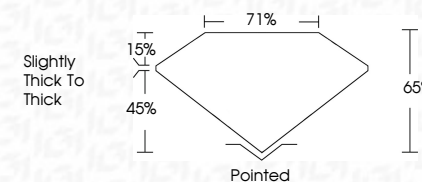
January 16, 2024
 IGI Report Number **LG615356745**
 Description **LABORATORY GROWN
DIAMOND**
 Shape and Cutting Style **CUT CORNERED
RECTANGULAR MODIFIED
BRILLIANT**
 Measurements **10.49 X 6.83 X 4.44 MM**

GRADING RESULTS

Carat Weight **3.00 CARATS**
 Color Grade **D**
 Clarity Grade **VS 2**

ADDITIONAL GRADING INFORMATION

Polish **EXCELLENT**
 Symmetry **EXCELLENT**
 Fluorescence **NONE**
 Inscription(s) **IGI LG615356745**
 Comments: This Laboratory Grown Diamond was created by Chemical Vapor Deposition (CVD) growth process and may include post-growth treatment. Type IIa



IGI

January 16, 2024
 IGI Report No LG615356745
CUT CORNERED RECT. MODIFIED BRILLIANT
 10.49 X 6.83 X 4.44 MM
 Carat Weight **3.00 CARATS**
 Color Grade **D**
 Clarity Grade **VS 2**
 Table **65%**
 Girdle **71%**
 Slightly thick to thick
 Pointed
 Culet
 Polish **EXCELLENT**
 Symmetry **EXCELLENT**
 Fluorescence **NONE**
 Inscription(s) **IGI LG615356745**

Comments: This Laboratory Grown Diamond was created by Chemical Vapor Deposition (CVD) growth process and may include post-growth treatment. Type IIa