



## LABORATORY GROWN DIAMOND REPORT

January 3, 2024	
IGI Report Number	LG615366597
Description	LABORATORY GROWN DIAMOND
Shape and Cutting Style	CUT CORNERED RECTANGULAR MODIFIED BRILLIANT
Measurements	8.67 X 6.25 X 4.22 MM

### ADDITIONAL GRADING INFORMATION

Polish	EXCELLENT
Symmetry	EXCELLENT
Fluorescence	NONE
Inscription(s)	 LG615366597

Comments: This Laboratory Grown Diamond was created by Chemical Vapor Deposition (CVD) growth process and may include post-growth treatment.  
Type IIa

LABORATORY GROWN DIAMOND REPORT

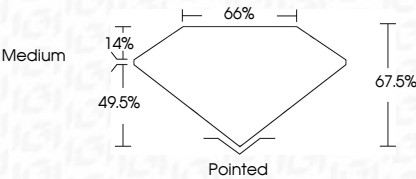
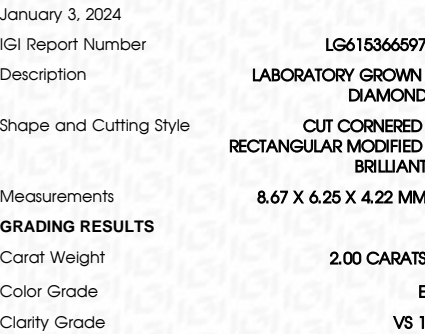
LG615366597

Report verification at [igi.org](https://www.igi.org)

Red symbols indicate internal characteristics.  
Green symbols indicate external characteristics.

IF				VVS <sup>1-2</sup>				VS <sup>1-2</sup>				SI <sup>1-2</sup>				I <sup>1-3</sup>			
Internally Flawless				Very Very Slightly Included				Very Slightly Included				Slightly Included				Included			
COLOR																			
D		E		F		G		H		I		J		Faint		Very Light		Light	

D	E	F	G	H	I	J	Faint	Very Light	Light
---	---	---	---	---	---	---	-------	------------	-------



Polish	EXCELLENT
Symmetry	EXCELLENT
Fluorescence	NONE
Inscription(s)	(15) LG615366597

Comments: This Laboratory Grown Diamond was created by Chemical Vapor Deposition (CVD) growth process and may include post-growth treatment.

Type IIa



FD - 10 20

THIS DOCUMENT WAS PRODUCED WITH THE FOLLOWING SECURITY MEASURES: SPECIAL DOCUMENT PAPER, INK SCREENS, WATERMARK, BACKGROUND DESIGNS, HOLOGRAM AND OTHER SECURITY FEATURES NOT LISTED AND DO EXCEED DOCUMENT SECURITY INDUSTRY GUIDELINES.

IGI Report No. LG615304597	2.10 CARATS	VVS 1	Pointed
CUT CORNERED RECT. MODIFIED BRILLIANT	6.67 X 4.26 X 4.22 MM	67.5%	EXCELLENT
	Color	60%	EXCELLENT
	Clarity Grade	Medium	NONE
	Depth		IGI LG615304597
	Table		
	Girdle		
	Culet		
	Polish		
	Symmetry		
	Fluorescence		
	Inscriptions(s)		

Comments:  
 The Laboratory Grown Diamond was created by Chemical Vapor Deposition (CVD) growth process and may include post-growth treatment.  
 Type Ia