

**ELECTRONIC COPY**

## LABORATORY GROWN DIAMOND REPORT

January 6, 2024	
IGI Report Number	LG615381092
Description	LABORATORY GROWN DIAMOND
Shape and Cutting Style	ROUND BRILLIANT
Measurements	10.24 - 10.31 X 6.28 MM

## GRADING RESULTS

Carat Weight	4.06 CARATS
Color Grade	F
Clarity Grade	SI 1
Cut Grade	IDEAL

### ADDITIONAL GRADING INFORMATION

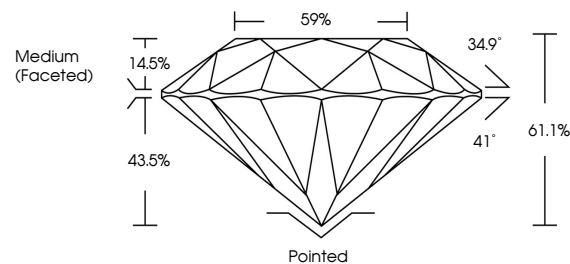
Polish	EXCELLENT
Symmetry	EXCELLENT
Fluorescence	NONE
Inscription(s)	LG615381092

Comments: This Laboratory Grown Diamond was created by Chemical Vapor Deposition (CVD) growth process and may include post-growth treatment.  
Type IIa

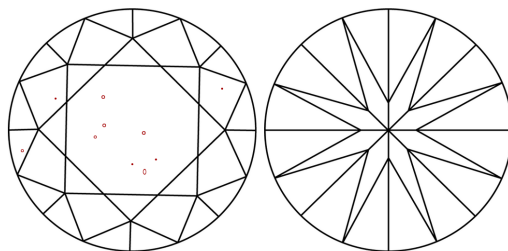
## LABORATORY GROWN DIAMOND REPORT

LG615381092  
Report verification at [igi.org](https://igi.org)

## PROPORTIONS



## CLARITY CHARACTERISTICS



## KEY TO SYMBOLS

Red symbols indicate internal characteristics.  
Green symbols indicate external characteristics.

LABORATORY GROWN  
DIAMOND REPORT

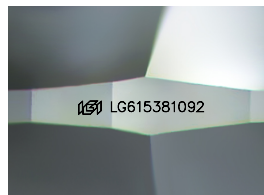
## GRADING SCALES

## CLARITY

IF	VVS <sup>1-2</sup>	VS <sup>1-2</sup>	SI <sup>1-2</sup>	I <sup>1-3</sup>
Internally Flawless	Very Very Slightly Included	Very Slightly Included	Slightly Included	Included

**COLOR**

D E F G H I J Faint Very Light Light



Sample Image Used



© IGI 2020, International Gemological Institute

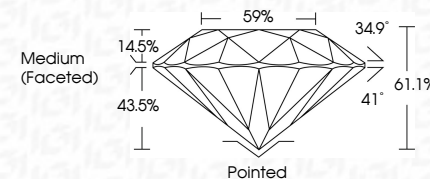
FD - 10 20

## LABORATORY GROWN DIAMOND REPORT


January 6, 2024	
IGI Report Number	LG615381092
Description	LABORATORY GROWN DIAMOND
Shape and Cutting Style	ROUND BRILLIANT
Measurements	10.24 - 10.31 X 6.28 MM

## GRADING RESULTS

Carat Weight	4.06 CARATS
Color Grade	F
Clarity Grade	SI 1
Cut Grade	IDEAL



### ADDITIONAL GRADING INFORMATION

Polish	EXCELLENT
Symmetry	EXCELLENT
Fluorescence	NONE
Inscription(s)	 LG615381092
Comments: This Laboratory Grown Diamond was created by Chemical Vapor Deposition (CVD) growth process and may include post-growth treatment.	
Type IIa	



January 5, 2024	GI Report No LG615361092	4.06 CARATS	SI	Pointed	Comments: This Fancy Green Diamond was treated by Chemical Vapor Deposition (CVD) growth process and may include post-growth treatment. Type IIa
ROUND BRILLIANT	10.34 - 10.31 X 5.28 MM	F	IDEAL	EXCELLENT	
	Carat Weight		61.1%	EXCELLENT	
	Color Grade		59%	NONE	
	Clarity Grade		Medium (Fasceso)	IGI LG615361092	
	Depth			Cut	
	Table			Polish	
	Girdle			Symmetry	
				Fluorescence	
				Inscriptions(s)	