



**INTERNATIONAL  
GEMOLOGICAL  
INSTITUTE**

**ELECTRONIC COPY**

**LABORATORY GROWN  
DIAMOND REPORT**

**LG616409754**

**IGI LABORATORY GROWN  
DIAMOND ID REPORT**

January 7, 2024  
IGI Report Number **LG616409754**  
**CUSHION MODIFIED BRILLIANT**  
**7.17 X 4.73 X 2.78 MM**  
Carat Weight 0.93 CARAT  
Color Grade D  
Clarity Grade I.F.  
Polish EXCELLENT  
Symmetry EXCELLENT  
Fluorescence NONE  
Inscription(s) LG616409754

Comments: As Grown - No indication of post-growth treatment. This Laboratory Grown Diamond was created by High Pressure High Temperature (HPHT) growth process. Type II

**LABORATORY GROWN DIAMOND REPORT**

**IGI LABORATORY GROWN DIAMOND IDENTIFICATION REPORT**

January 7, 2024  
IGI Report Number LG616409754  
Description LABORATORY GROWN DIAMOND  
Shape and Cutting Style CUSHION MODIFIED BRILLIANT  
Measurements 7.17 X 4.73 X 2.78 MM

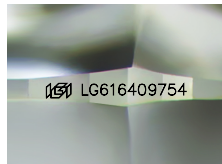
**GRADING RESULTS**

Carat Weight 0.93 CARAT  
Color Grade D  
Clarity Grade INTERNALLY FLAWLESS

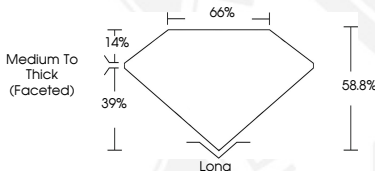
**ADDITIONAL GRADING INFORMATION**

Polish EXCELLENT  
Symmetry EXCELLENT  
Fluorescence NONE  
Inscription(s) LG616409754

Comments: As Grown - No indication of post-growth treatment. This Laboratory Grown Diamond was created by High Pressure High Temperature (HPHT) growth process. Type II



Sample Image Used



**IGI LABORATORY GROWN  
DIAMOND ID REPORT**

January 7, 2024  
IGI Report Number **LG616409754**  
**CUSHION MODIFIED BRILLIANT**  
**7.17 X 4.73 X 2.78 MM**  
Carat Weight 0.93 CARAT  
Color Grade D  
Clarity Grade I.F.  
Polish EXCELLENT  
Symmetry EXCELLENT  
Fluorescence NONE  
Inscription(s) LG616409754

Comments: As Grown - No indication of post-growth treatment. This Laboratory Grown Diamond was created by High Pressure High Temperature (HPHT) growth process. Type II

THIS DOCUMENT WAS PRODUCED WITH THE FOLLOWING SECURITY MEASURES: SPECIAL DOCUMENT PAPER, INK SCREENS, WATERMARK, BACKGROUND DESIGN, HOLOGRAM AND OTHER SECURITY FEATURES NOT LISTED AND DO EXCEED DOCUMENT SECURITY INDUSTRY GUIDELINES.

For terms & conditions and to verify this report, please visit [www.igi.org](http://www.igi.org)