



ELECTRONIC COPY

LG616431620

Report verification at igi.org

LABORATORY GROWN DIAMOND REPORT

January 13, 2024
IGI Report Number LG616431620

Description LABORATORY GROWN DIAMOND
Shape and Cutting Style PRINCESS CUT
Measurements 5.53 X 5.51 X 3.88 MM

GRADING RESULTS

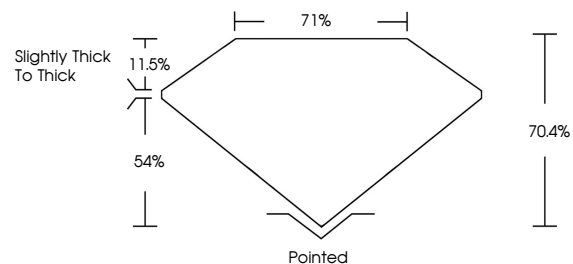
Carat Weight 1.06 CARAT
Color Grade G
Clarity Grade VVS 2

ADDITIONAL GRADING INFORMATION

Polish VERY GOOD
Symmetry VERY GOOD
Fluorescence NONE
Inscription(s) LG616431620

Comments: This Laboratory Grown Diamond was created by Chemical Vapor Deposition (CVD) growth process and may include post-growth treatment. Type IIa

PROPORTIONS



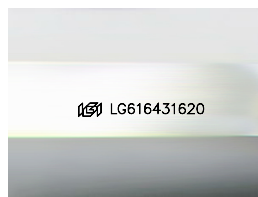
GRADING SCALES

CLARITY

Table with 5 columns: IF, VVS 1-2, VS 1-2, SI 1-2, I 1-3. Row 1: Internally Flawless, Very Very Slightly Included, Very Slightly Included, Slightly Included, Included.

COLOR

Table with 11 columns: D, E, F, G, H, I, J, Faint, Very Light, Light.

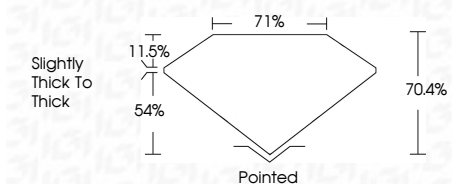


Sample Image Used

January 13, 2024
IGI Report Number LG616431620
Description LABORATORY GROWN DIAMOND
Shape and Cutting Style PRINCESS CUT
Measurements 5.53 X 5.51 X 3.88 MM
GRADING RESULTS
Carat Weight 1.06 CARAT
Color Grade G
Clarity Grade VVS 2

ADDITIONAL GRADING INFORMATION

Polish VERY GOOD
Symmetry VERY GOOD
Fluorescence NONE
Inscription(s) LG616431620
Comments: This Laboratory Grown Diamond was created by Chemical Vapor Deposition (CVD) growth process and may include post-growth treatment. Type IIa



IGI

January 13, 2024
IGI Report No LG616431620
PRINCESS CUT
5.53 X 5.51 X 3.88 MM
Carat Weight 1.06 CARAT
Color Grade G
Clarity Grade VVS 2
Depth 70.4%
Table 11.5%
Girdle Slightly Thick To Thick
Culet Pointed
Polish VERY GOOD
Symmetry VERY GOOD
Fluorescence NONE
Inscription(s) LG616431620
Comments: This Laboratory Grown Diamond was created by Chemical Vapor Deposition (CVD) growth process and may include post-growth treatment. Type IIa