



**INTERNATIONAL  
GEMOLOGICAL  
INSTITUTE**

**ELECTRONIC COPY**

**LABORATORY GROWN  
DIAMOND REPORT**

**LG617403327**

**IGI LABORATORY GROWN  
DIAMOND ID REPORT**

January 18, 2024  
IGI Report Number **LG617403327**  
**CUT CORNERED RECTANGULAR  
MODIFIED BRILLIANT**  
**5.81 X 3.86 X 2.56 MM**  
Carat Weight 0.51 CARAT  
Color Grade FANCY VIVID GREEN  
Clarity Grade VS 1  
Polish EXCELLENT  
Symmetry EXCELLENT  
Fluorescence NONE  
Inscription(s) **IGI LG617403327**

Comments: This Laboratory Grown Diamond was created by Chemical Vapor Deposition (CVD) growth process. Indications of post-growth treatment.

**LABORATORY GROWN DIAMOND REPORT**

**IGI LABORATORY GROWN DIAMOND IDENTIFICATION REPORT**

January 18, 2024  
IGI Report Number LG617403327  
Description LABORATORY GROWN DIAMOND  
Shape and Cutting Style CUT CORNERED RECTANGULAR MODIFIED BRILLIANT  
Measurements 5.81 X 3.86 X 2.56 MM

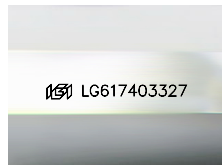
**GRADING RESULTS**

Carat Weight 0.51 CARAT  
Color Grade FANCY VIVID GREEN  
Clarity Grade VS 1

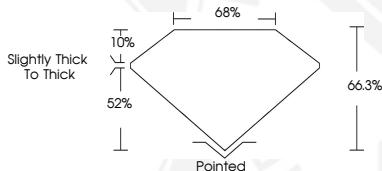
**ADDITIONAL GRADING INFORMATION**

Polish EXCELLENT  
Symmetry EXCELLENT  
Fluorescence NONE  
Inscription(s) **IGI LG617403327**

Comments: This Laboratory Grown Diamond was created by Chemical Vapor Deposition (CVD) growth process. Indications of post-growth treatment.



Sample Image Used



**IGI LABORATORY GROWN  
DIAMOND ID REPORT**

January 18, 2024  
IGI Report Number **LG617403327**  
**CUT CORNERED RECTANGULAR  
MODIFIED BRILLIANT**  
**5.81 X 3.86 X 2.56 MM**  
Carat Weight 0.51 CARAT  
Color Grade FANCY VIVID GREEN  
Clarity Grade VS 1  
Polish EXCELLENT  
Symmetry EXCELLENT  
Fluorescence NONE  
Inscription(s) **IGI LG617403327**

Comments: This Laboratory Grown Diamond was created by Chemical Vapor Deposition (CVD) growth process. Indications of post-growth treatment.



THIS DOCUMENT WAS PRODUCED WITH THE FOLLOWING SECURITY MEASURES: SPECIAL DOCUMENT PAPER, INK SCREENS, WATERMARK, BACKGROUND DESIGN, HOLOGRAM AND OTHER SECURITY FEATURES NOT LISTED AND DO EXCEED DOCUMENT SECURITY INDUSTRY GUIDELINES.

For terms & conditions and to verify this report, please visit [www.igi.org](http://www.igi.org)