

ELECTRONIC COPY

LABORATORY GROWN DIAMOND REPORT

January 19, 2024	
IGI Report Number	LG617424958
Description	LABORATORY GROWN DIAMOND
Shape and Cutting Style	ROUND BRILLIANT
Measurements	6.49 - 6.53 X 4.05 MM

GRADING RESULTS

Carat Weight	1.07 CARAT
Color Grade	D
Clarity Grade	VVS 2
Cut Grade	IDEAL

ADDITIONAL GRADING INFORMATION

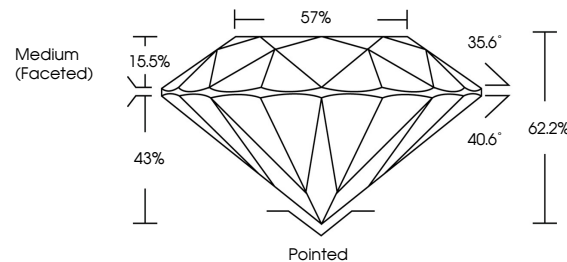
Polish	EXCELLENT
Symmetry	EXCELLENT
Fluorescence	NONE
Inscription(s)	15 LG617424958

Comments: As Grown - No indication of post-growth treatment.
This Laboratory Grown Diamond was created by High Pressure High Temperature (HPHT) growth process.
Type II

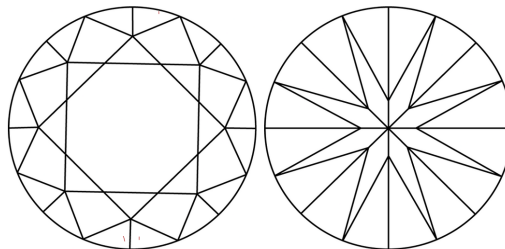
LABORATORY GROWN DIAMOND REPORT

LG617424958
Report verification at igi.org

PROPORTIONS



CLARITY CHARACTERISTICS



KEY TO SYMBOLS

Red symbols indicate internal characteristics.
Green symbols indicate external characteristics.

LABORATORY GROWN
DIAMOND REPORT

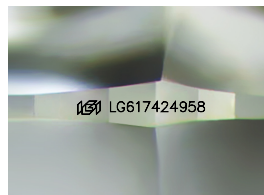
GRADING SCALES

CLARITY

IF	VVS ¹⁻²	VS ¹⁻²	SI ¹⁻²	I ¹⁻³
Internally Flawless	Very Very Slightly Included	Very Slightly Included	Slightly Included	Included

COLOR

D E F G H I J Faint Very Light Light



Sample Image Used



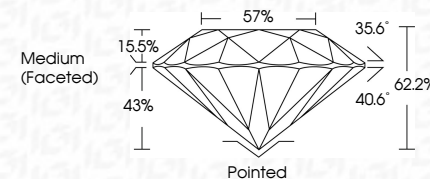
© IGI 2020, International Gemological Institute

FD - 10 20

LABORATORY GROWN DIAMOND REPORT

January 19, 2024	
IGI Report Number	LG617424958
Description	LABORATORY GROWN DIAMOND
Shape and Cutting Style	ROUND BRILLIANT
Measurements	6.49 - 6.53 X 4.05 MM

GRADING RESULTS	
Carat Weight	1.07 CARAT
Color Grade	D
Clarity Grade	VVS 2
Cut Grade	IDEAL



ADDITIONAL GRADING INFORMATION

Polish	EXCELLENT
Symmetry	EXCELLENT
Fluorescence	NONE
Inscription(s)	LG6 LG617424958
Comments: As Grown - No indication of post-growth treatment.	
This Laboratory Grown Diamond was created by High Pressure High Temperature (HPHT) growth process.	
Type II	



January 19, 2024	1.07 CARAT
G Report No LS617424988	D
SI BELLANT	VVS 2
ROUND	IDEAL
4.69 - 4.63 X 4.05 MM	62.2%
Color Grade	57%
Carat Weight	Medium (face-set)
Cut Grade	Pointed
Clarity Grade	EXCELLENT
Cut Grade	EXCELLENT
Depth	Polish
Table	Symmetry
Girdle	Fluorescence
	Inscription(s)
	NONE
	#61LS617424988

Comments:
No indication of post-growth treatment.
The Laboratory Grown Diamond was created by High Pressure High Temperature (HPHT) growth process.

Type II