



**INTERNATIONAL
GEMOLOGICAL
INSTITUTE**

ELECTRONIC COPY

**LABORATORY GROWN
DIAMOND REPORT**

LG617425451

**IGI LABORATORY GROWN
DIAMOND ID REPORT**

January 18, 2024
IGI Report Number **LG617425451**
ROUND BRILLIANT
5.58 - 5.61 X 3.42 MM
Carat Weight 0.67 CARAT
Color Grade E
Clarity Grade VS 1
Cut Grade EXCELLENT
Polish VERY GOOD
Symmetry GOOD
Fluorescence NONE
Inscription(s) **IGI LG617425451**

Comments: This Laboratory Grown Diamond was created by Chemical Vapor Deposition (CVD) growth process and may include post-growth treatment. Type Ila

LABORATORY GROWN DIAMOND REPORT

IGI LABORATORY GROWN DIAMOND IDENTIFICATION REPORT

January 18, 2024
IGI Report Number LG617425451
Description LABORATORY GROWN DIAMOND
Shape and Cutting Style ROUND BRILLIANT
Measurements 5.58 - 5.61 X 3.42 MM

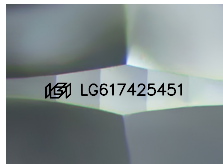
GRADING RESULTS

Carat Weight 0.67 CARAT
Color Grade E
Clarity Grade VS 1
Cut Grade EXCELLENT

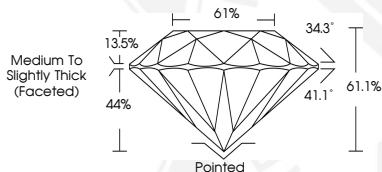
ADDITIONAL GRADING INFORMATION

Polish VERY GOOD
Symmetry GOOD
Fluorescence NONE
Inscription(s) **IGI LG617425451**

Comments: This Laboratory Grown Diamond was created by Chemical Vapor Deposition (CVD) growth process and may include post-growth treatment.
Type Ila



Sample Image Used



**IGI LABORATORY GROWN
DIAMOND ID REPORT**

January 18, 2024
IGI Report Number **LG617425451**
ROUND BRILLIANT
5.58 - 5.61 X 3.42 MM
Carat Weight 0.67 CARAT
Color Grade E
Clarity Grade VS 1
Cut Grade EXCELLENT
Polish VERY GOOD
Symmetry GOOD
Fluorescence NONE
Inscription(s) **IGI LG617425451**

Comments: This Laboratory Grown Diamond was created by Chemical Vapor Deposition (CVD) growth process and may include post-growth treatment. Type Ila

THIS DOCUMENT WAS PRODUCED WITH THE FOLLOWING SECURITY MEASURES: SPECIAL DOCUMENT PAPER, INK SCREENS, WATERMARK, BACKGROUND DESIGN, HOLOGRAM AND OTHER SECURITY FEATURES NOT LISTED AND DO EXCEED DOCUMENT SECURITY INDUSTRY GUIDELINES.

For terms & conditions and to verify this report, please visit www.igi.org