



ELECTRONIC COPY

LABORATORY GROWN DIAMOND REPORT

| | |
|-------------------------|-----------------------------|
| January 12, 2024 | |
| IGI Report Number | LG617437035 |
| Description | LABORATORY GROWN DIAMOND |
| Shape and Cutting Style | EMERALD CUT |
| Measurements | 6.75 X 4.78 X 3.12 MM |

GRADING RESULTS

| | |
|---------------|------------|
| Carat Weight | 1.00 CARAT |
| Color Grade | D |
| Clarity Grade | VVS 2 |

ADDITIONAL GRADING INFORMATION

| | |
|----------------|----------------|
| Polish | EXCELLENT |
| Symmetry | EXCELLENT |
| Fluorescence | NONE |
| Inscription(s) | 15 LG617437035 |

Comments: As Grown - No indication of post-growth treatment.

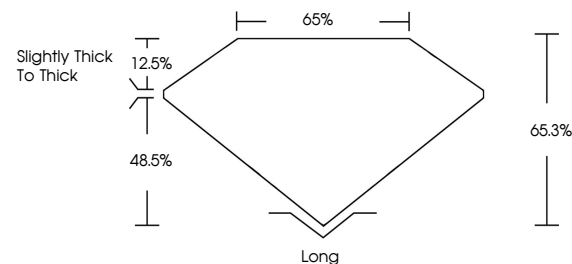
This Laboratory Grown Diamond was created by High Pressure High Temperature (HPHT) growth process.
Type II

LABORATORY GROWN DIAMOND REPORT

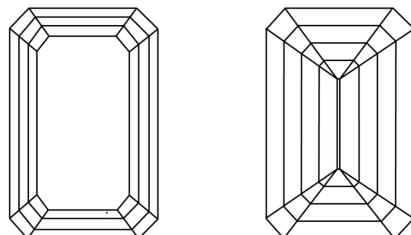
LG617437035

Report verification at igi.org

PROPORTIONS



CLARITY CHARACTERISTICS



KEY TO SYMBOLS

Red symbols indicate internal characteristics.
Green symbols indicate external characteristics.

LABORATORY GROWN
DIAMOND REPORT

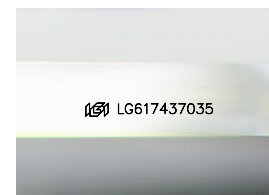
GRADING SCALES

CLARITY

| IF | VVS ¹⁻² | VS ¹⁻² | SI ¹⁻² | I ¹⁻³ |
|---------------------|-----------------------------|------------------------|-------------------|------------------|
| Internally Flawless | Very Very Slightly Included | Very Slightly Included | Slightly Included | Included |

COLOR

D E F G H I J Faint Very Light Light



Sample Image Used



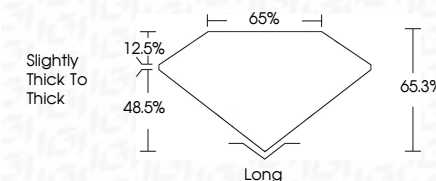
© IGI 2020, International Gemological Institute

FD - 10 20

THIS DOCUMENT WAS PRODUCED WITH THE FOLLOWING SECURITY MEASURES: SPECIAL DOCUMENT PAPER, INK SCREENS, WATERMARK, BACKGROUND DESIGNS, HOLOGRAM AND OTHER SECURITY FEATURES NOT LISTED AND DO EXCEED DOCUMENT SECURITY INDUSTRY GUIDELINE

LABORATORY GROWN DIAMOND REPORT

| | |
|-------------------------|-----------------------------|
| January 12, 2024 | |
| IGI Report Number | LG617437035 |
| Description | LABORATORY GROWN DIAMOND |
| Shape and Cutting Style | EMERALD CUT |
| Measurements | 6.75 X 4.78 X 3.12 MM |
| GRADING RESULTS | |
| Carat Weight | 1.00 CARAT |
| Color Grade | D |
| Clarity Grade | VVS 2 |



ADDITIONAL GRADING INFORMATION

| | |
|--|------------------------------------|
| Polish | EXCELLENT |
| Symmetry | EXCELLENT |
| Fluorescence | NONE |
| Inscription(s) | LG617437035 LG617437035 |
| <p>Comments: As Grown - No indication of post-growth treatment.</p> <p>This Laboratory Grown Diamond was created by High Pressure High Temperature (HPHT) growth process.</p> <p>Type II</p> | |

[illegible]

Comments:
As Grown - No indication of post-growth treatment.