



ELECTRONIC COPY

LABORATORY GROWN DIAMOND REPORT

LG617470561

Report verification at igi.org

LABORATORY GROWN DIAMOND REPORT

LABORATORY GROWN DIAMOND REPORT

LABORATORY GROWN DIAMOND REPORT

January 12, 2024
IGI Report Number LG617470561
Description LABORATORY GROWN DIAMOND
Shape and Cutting Style ROUND BRILLIANT
Measurements 7.15 - 7.21 X 4.37 MM

GRADING RESULTS

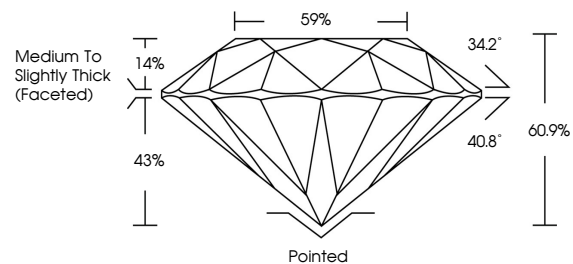
Carat Weight 1.40 CARAT
Color Grade G
Clarity Grade VS 2
Cut Grade IDEAL

ADDITIONAL GRADING INFORMATION

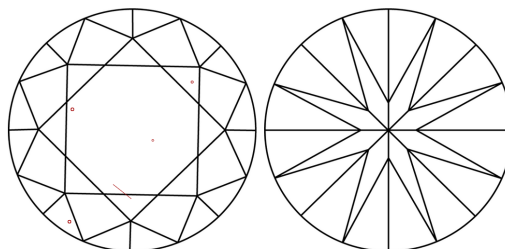
Polish EXCELLENT
Symmetry EXCELLENT
Fluorescence NONE
Inscription(s) IGI LG617470561

Comments: This Laboratory Grown Diamond was created by Chemical Vapor Deposition (CVD) growth process and may include post-growth treatment. Type IIa

PROPORTIONS



CLARITY CHARACTERISTICS



KEY TO SYMBOLS

Red symbols indicate internal characteristics.
Green symbols indicate external characteristics.

GRADING SCALES

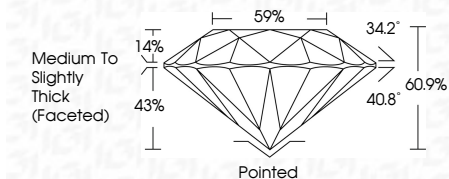
CLARITY

Table mapping clarity grades (IF, VVS, VS, SI, I) to descriptions (Internally Flawless, Very Very Slightly Included, etc.)

COLOR

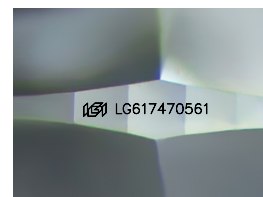
Table mapping color grades (D, E, F, G, H, I, J) to descriptions (Faint, Very Light, Light)

January 12, 2024
IGI Report Number LG617470561
Description LABORATORY GROWN DIAMOND
Shape and Cutting Style ROUND BRILLIANT
Measurements 7.15 - 7.21 X 4.37 MM
GRADING RESULTS
Carat Weight 1.40 CARAT
Color Grade G
Clarity Grade VS 2
Cut Grade IDEAL



ADDITIONAL GRADING INFORMATION

Polish EXCELLENT
Symmetry EXCELLENT
Fluorescence NONE
Inscription(s) IGI LG617470561
Comments: This Laboratory Grown Diamond was created by Chemical Vapor Deposition (CVD) growth process and may include post-growth treatment. Type IIa



Sample Image Used



IGI

January 12, 2024
IGI Report No LG617470561
ROUND BRILLIANT
7.15 - 7.21 X 4.37 MM
1.40 CARAT
Color Grade G
Clarity Grade VS 2
Cut Grade IDEAL
Depth 60.9%
Table 59%
Medium To Slightly Thick (Faceted)
Culet Pointed
Polish EXCELLENT
Symmetry EXCELLENT
Fluorescence NONE
Inscription(s) IGI LG617470561
Comments: This Laboratory Grown Diamond was created by Chemical Vapor Deposition (CVD) growth process and may include post-growth treatment. Type IIa