



ELECTRONIC COPY

LG617484189

Report verification at igi.org

LABORATORY GROWN DIAMOND REPORT

January 17, 2024
 IGI Report Number **LG617484189**
 Description **LABORATORY GROWN
DIAMOND**
 Shape and Cutting Style **ROUND BRILLIANT**
 Measurements **6.54 - 6.56 X 3.92 MM**

GRADING RESULTS

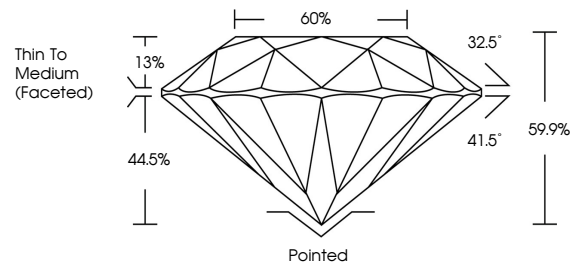
Carat Weight **1.01 CARAT**
 Color Grade **G**
 Clarity Grade **SI 1**
 Cut Grade **EXCELLENT**

ADDITIONAL GRADING INFORMATION

Polish **EXCELLENT**
 Symmetry **EXCELLENT**
 Fluorescence **NONE**
 Inscription(s) **IGI LG617484189**

Comments: This Laboratory Grown Diamond was created by Chemical Vapor Deposition (CVD) growth process and may include post-growth treatment. Type IIa

PROPORTIONS



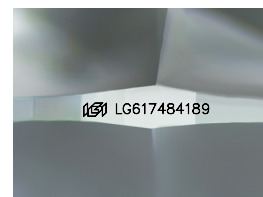
GRADING SCALES

CLARITY

IF	VVS ¹⁻²	VS ¹⁻²	SI ¹⁻²	I ¹⁻³
Internally Flawless	Very Very Slightly Included	Very Slightly Included	Slightly Included	Included

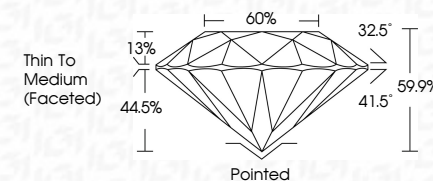
COLOR

D	E	F	G	H	I	J	Faint	Very Light	Light
---	---	---	---	---	---	---	-------	------------	-------



Sample Image Used

January 17, 2024
 IGI Report Number **LG617484189**
 Description **LABORATORY GROWN
DIAMOND**
 Shape and Cutting Style **ROUND BRILLIANT**
 Measurements **6.54 - 6.56 X 3.92 MM**
GRADING RESULTS
 Carat Weight **1.01 CARAT**
 Color Grade **G**
 Clarity Grade **SI 1**
 Cut Grade **EXCELLENT**



ADDITIONAL GRADING INFORMATION

Polish **EXCELLENT**
 Symmetry **EXCELLENT**
 Fluorescence **NONE**
 Inscription(s) **IGI LG617484189**
 Comments: This Laboratory Grown Diamond was created by Chemical Vapor Deposition (CVD) growth process and may include post-growth treatment. Type IIa



January 17, 2024	1.01 CARAT	G	SI 1	EXCELLENT	60%	Pointed	EXCELLENT	EXCELLENT	NONE	IGI LG617484189
IGI Report No LG617484189	Carat Weight	Color Grade	Clarity Grade	Cut Grade	Depth	Thin To Medium (Faceted)	Polish	Symmetry	Fluorescence	Inscription(s)
ROUND BRILLIANT	6.54 - 6.56 X 3.92 MM									

Comments: This Laboratory Grown Diamond was created by Chemical Vapor Deposition (CVD) growth process and may include post-growth treatment. Type IIa