



ELECTRONIC COPY

LABORATORY GROWN DIAMOND REPORT

January 24, 2024	
IGI Report Number	LG617488615
Description	LABORATORY GROWN DIAMOND
Shape and Cutting Style	EMERALD CUT
Measurements	6.25 X 4.59 X 3.19 MM

GRADING RESULTS

Carat Weight	1.01 CARAT
Color Grade	FANCY INTENSE PINK
Clarity Grade	VS 2

ADDITIONAL GRADING INFORMATION

Polish	EXCELLENT
Symmetry	EXCELLENT
Fluorescence	SLIGHT
Inscription(s)	 LG617488615

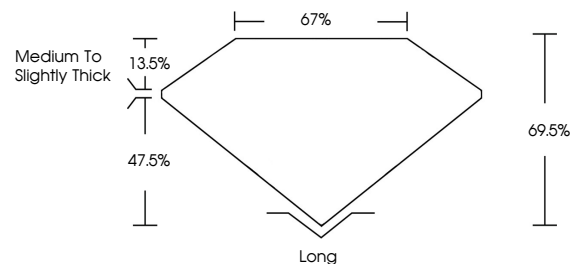
Comments: This Laboratory Grown Diamond was created by Chemical Vapor Deposition (CVD) growth process.
Indications of post-growth treatment.

Secondary color: Brown

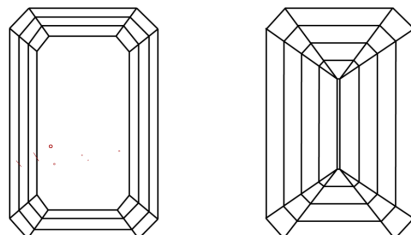
LABORATORY GROWN DIAMOND REPORT

LG617488615
Report verification at igi.org

PROPORTIONS



CLARITY CHARACTERISTICS



KEY TO SYMBOLS

Red symbols indicate internal characteristics.
Green symbols indicate external characteristics.

LABORATORY GROWN
DIAMOND REPORT

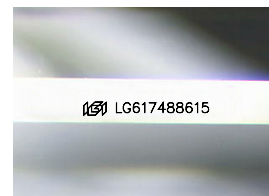
GRADING SCALES

CLARITY

IF	VVS ¹⁻²	VS ¹⁻²	SI ¹⁻²	I ¹⁻³
Internally Flawless	Very Very Slightly Included	Very Slightly Included	Slightly Included	Included

COLOR

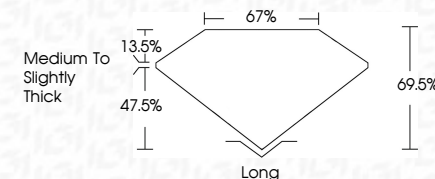
D	E	F	G	H	I	J	Faint	Very Light	Light
Light Tint			Fancy Light		Fancy		Fancy Intense		Fancy Vivid



Sample Image Used



January 24, 2024	
IGI Report Number	LG617488615
Description	LABORATORY GROWN DIAMOND
Shape and Cutting Style	EMERALD CUT
Measurements	6.25 X 4.59 X 3.19 MM
GRADING RESULTS	
Carat Weight	1.01 CARAT
Color Grade	FANCY INTENSE PINK
Clarity Grade	VS 2



ADDITIONAL GRADING INFORMATION

Polish	EXCELLENT
Symmetry	EXCELLENT
Fluorescence	SLIGHT
Inscription(s)	LG LG617488615
<p>Comments: This Laboratory Grown Diamond was created by Chemical Vapor Deposition (CVD) growth process.</p> <p>Indications of post-growth treatment.</p>	

Secondary color: Brown



© IGI 2020, International Gemological Institute

FD - 10 20

www.igi.org

THIS DOCUMENT WAS PRODUCED WITH THE FOLLOWING SECURITY MEASURES: SPECIAL DOCUMENT PAPER, INK SCREENS, WATERMARK BACKGROUND DESIGNS, HOLOGRAM AND OTHER SECURITY FEATURES NOT LISTED AND DO EXCEED DOCUMENT SECURITY INDUSTRY GUIDELINES

January 24, 2024
GI Report No LG617488615
EMERALD COT

1.01 CARAT	VS 2	Long	EXCELLENT
FANCY INTENSE PINK	69.6%	Medium To Slightly Thick	EXCELLENT
	67%		SUITE
			see 1547788415

Comments:
This Laboratory Grown Diamond was created by Chemical Vapor Deposition (CVD) growth process.
indications of post-growth treatment.