



ELECTRONIC COPY

LG618421619

Report verification at igi.org

LABORATORY GROWN DIAMOND REPORT

January 29, 2024
 IGI Report Number **LG618421619**
 Description **LABORATORY GROWN
DIAMOND**
 Shape and Cutting Style **EMERALD CUT**
 Measurements **11.14 X 7.18 X 4.62 MM**

GRADING RESULTS

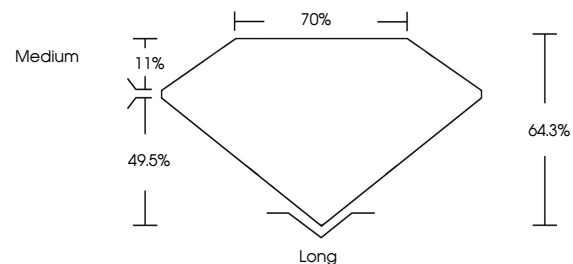
Carat Weight **3.71 CARATS**
 Color Grade **E**
 Clarity Grade **VS 1**

ADDITIONAL GRADING INFORMATION

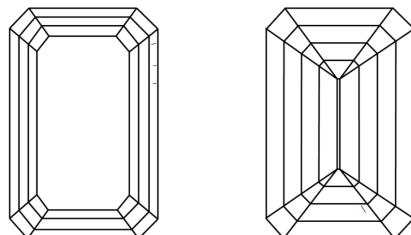
Polish **EXCELLENT**
 Symmetry **EXCELLENT**
 Fluorescence **NONE**
 Inscription(s) **IGI LG618421619**

Comments: This Laboratory Grown Diamond was created by Chemical Vapor Deposition (CVD) growth process and may include post-growth treatment. Type IIa

PROPORTIONS



CLARITY CHARACTERISTICS



KEY TO SYMBOLS

Red symbols indicate internal characteristics.
 Green symbols indicate external characteristics.

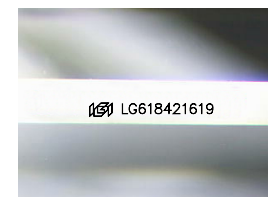
GRADING SCALES

CLARITY

IF	VVS ¹⁻²	VS ¹⁻²	SI ¹⁻²	I ¹⁻³
Internally Flawless	Very Very Slightly Included	Very Slightly Included	Slightly Included	Included

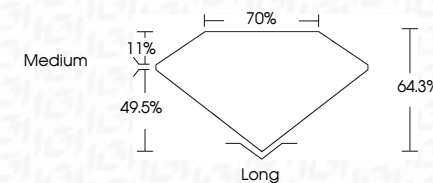
COLOR

D	E	F	G	H	I	J	Faint	Very Light	Light
---	---	---	---	---	---	---	-------	------------	-------



Sample Image Used

January 29, 2024
 IGI Report Number **LG618421619**
 Description **LABORATORY GROWN
DIAMOND**
 Shape and Cutting Style **EMERALD CUT**
 Measurements **11.14 X 7.18 X 4.62 MM**
GRADING RESULTS
 Carat Weight **3.71 CARATS**
 Color Grade **E**
 Clarity Grade **VS 1**



ADDITIONAL GRADING INFORMATION

Polish **EXCELLENT**
 Symmetry **EXCELLENT**
 Fluorescence **NONE**
 Inscription(s) **IGI LG618421619**
 Comments: This Laboratory Grown Diamond was created by Chemical Vapor Deposition (CVD) growth process and may include post-growth treatment. Type IIa



IGI

January 29, 2024
 IGI Report No. LG618421619
EMERALD CUT
 11.14 X 7.18 X 4.62 MM
 Carat Weight **3.71 CARATS**
 Color Grade **E**
 Clarity Grade **VS 1**
 Depth **64.3%**
 Table **70%**
 Girdle **Medium**
 Culet **Long**
 Polish **EXCELLENT**
 Symmetry **EXCELLENT**
 Fluorescence **NONE**
 Inscription(s) **IGI LG618421619**

Comments: This Laboratory Grown Diamond was created by Chemical Vapor Deposition (CVD) growth process and may include post-growth treatment. Type IIa

