

ELECTRONIC COPY

LABORATORY GROWN DIAMOND REPORT

January 22, 2024	
IGI Report Number	LG618438880
Description	LABORATORY GROWN DIAMOND
Shape and Cutting Style	ROUND BRILLIANT
Measurements	9.97 - 10.01 X 6.24 MM

GRADING RESULTS

Carat Weight	3.85 CARATS
Color Grade	G
Clarity Grade	VS 2
Cut Grade	IDEAL

ADDITIONAL GRADING INFORMATION

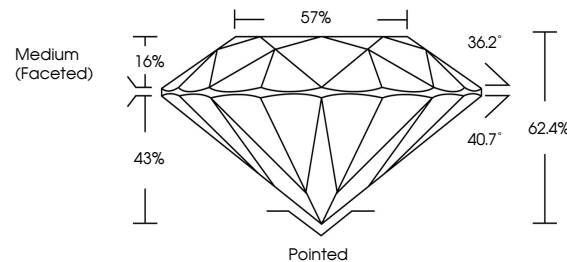
Polish	EXCELLENT
Symmetry	EXCELLENT
Fluorescence	NONE
Inscription(s)	LG618438880

Comments: This Laboratory Grown Diamond was created by Chemical Vapor Deposition (CVD) growth process and may include post-growth treatment. Type IIa

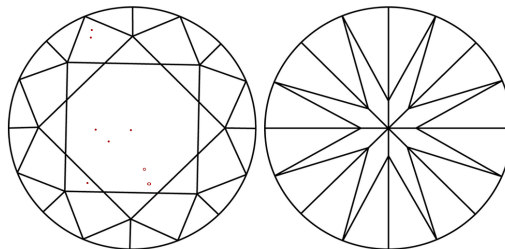
LABORATORY GROWN DIAMOND REPORT

LG618438880
Report verification at igi.org

PROPORTIONS



CLARITY CHARACTERISTICS



KEY TO SYMBOLS

Red symbols indicate internal characteristics.
Green symbols indicate external characteristics.

LABORATORY GROWN
DIAMOND REPORT

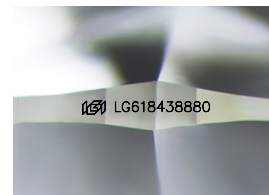
GRADING SCALES

CLARITY

IF	VVS ¹⁻²	VS ¹⁻²	SI ¹⁻²	I ¹⁻³
Internally Flawless	Very Very Slightly Included	Very Slightly Included	Slightly Included	Included

COLOR

D E F G H I J Faint Very Light Light



Sample Image Used



© IGI 2020, International Gemological Institute

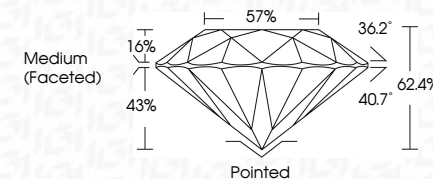
FD - 10 20

LABORATORY GROWN DIAMOND REPORT

January 22, 2024	
IGI Report Number	LG618438880
Description	LABORATORY GROWN DIAMOND
Shape and Cutting Style	ROUND BRILLIANT
Measurements	9.97 - 10.01 X 6.24 MM

GRADING RESULTS

Carat Weight	3.85 CARATS
Color Grade	G
Clarity Grade	VS 2
Cut Grade	IDEAL



ADDITIONAL GRADING INFORMATION

Polish	EXCELLENT
Symmetry	EXCELLENT
Fluorescence	NONE
Inscription(s)	 LG618438880

Comments: This Laboratory Grown Diamond was created by Chemical Vapor Deposition (CVD) growth process and may include post-growth treatment.
Type IIa



January 22, 2024	G Report No LG618439880	3.85 CARATS VS 2 IDEAL 62.4% 57%	Painted EXCELLENT EXCELLENT NONE IGI LG618439880
ROUND BRILLIANT	.97 - 10.01 X 6.24 MM	Carat Weight Color Grade Clarity Grade Depth Origin Table Girdle Medium Faceted=O	Comments:
			This Very Gross Diamond was treated by Chemical Vapor Deposition (CVD) growth process and may include post-growth treatment.
			Type IIa

Comments:
This Laboratory Grown Diamond was created by Chemical Vapor Deposition (CVD) growth process and may include post-growth treatment