



ELECTRONIC COPY

LG618441079

Report verification at igi.org

LABORATORY GROWN DIAMOND REPORT

January 31, 2024
IGI Report Number **LG618441079**
Description **LABORATORY GROWN
DIAMOND**
Shape and Cutting Style **PEAR BRILLIANT**
Measurements **9.76 X 6.17 X 3.71 MM**

GRADING RESULTS

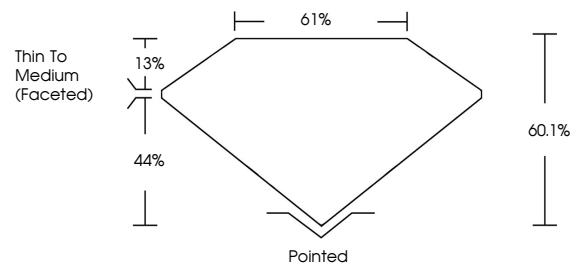
Carat Weight **1.26 CARAT**
Color Grade **F**
Clarity Grade **VS 2**

ADDITIONAL GRADING INFORMATION

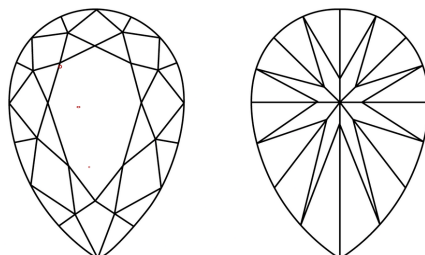
Polish **EXCELLENT**
Symmetry **VERY GOOD**
Fluorescence **NONE**
Inscription(s) **IGI LG618441079**

Comments: This Laboratory Grown Diamond was created by Chemical Vapor Deposition (CVD) growth process and may include post-growth treatment. Type IIa

PROPORTIONS



CLARITY CHARACTERISTICS



KEY TO SYMBOLS

Red symbols indicate internal characteristics.
Green symbols indicate external characteristics.

GRADING SCALES

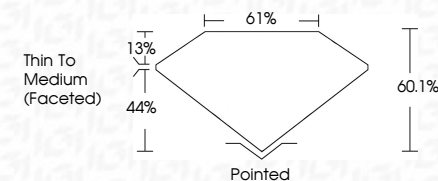
CLARITY

IF	VVS ¹⁻²	VS ¹⁻²	SI ¹⁻²	I ¹⁻³
Internally Flawless	Very Very Slightly Included	Very Slightly Included	Slightly Included	Included

COLOR

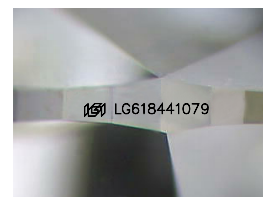
D	E	F	G	H	I	J	Faint	Very Light	Light
---	---	---	---	---	---	---	-------	------------	-------

January 31, 2024
IGI Report Number **LG618441079**
Description **LABORATORY GROWN
DIAMOND**
Shape and Cutting Style **PEAR BRILLIANT**
Measurements **9.76 X 6.17 X 3.71 MM**
GRADING RESULTS
Carat Weight **1.26 CARAT**
Color Grade **F**
Clarity Grade **VS 2**



ADDITIONAL GRADING INFORMATION

Polish **EXCELLENT**
Symmetry **VERY GOOD**
Fluorescence **NONE**
Inscription(s) **IGI LG618441079**
Comments: This Laboratory Grown Diamond was created by Chemical Vapor Deposition (CVD) growth process and may include post-growth treatment. Type IIa



Sample Image Used



IGI

January 31, 2024
IGI Report No LG618441079
PEAR BRILLIANT
9.76 X 6.17 X 3.71 MM
Carat Weight **1.26 CARAT**
Color Grade **F**
Clarity Grade **VS 2**
Depth **60.1%**
Table **61%**
Girdle
Thin To Medium (Faceted)
Culet **Pointed**
Polish **EXCELLENT**
Symmetry **VERY GOOD**
Fluorescence **NONE**
Inscription(s) **IGI LG618441079**

Comments: This Laboratory Grown Diamond was created by Chemical Vapor Deposition (CVD) growth process and may include post-growth treatment. Type IIa