



ELECTRONIC COPY

LG618458043

Report verification at igi.org

LABORATORY GROWN DIAMOND REPORT

February 24, 2024
 IGI Report Number **LG618458043**
 Description **LABORATORY GROWN
DIAMOND**
 Shape and Cutting Style **ROUND BRILLIANT**
 Measurements **8.18 - 8.23 X 5.03 MM**

GRADING RESULTS

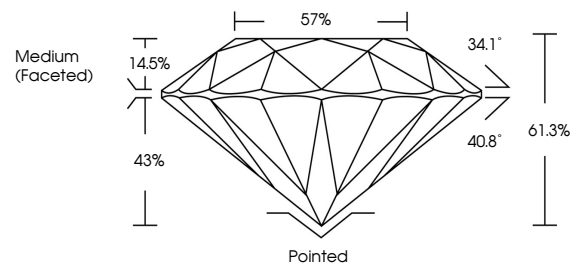
Carat Weight **2.08 CARATS**
 Color Grade **D**
 Clarity Grade **SI 1**
 Cut Grade **IDEAL**

ADDITIONAL GRADING INFORMATION

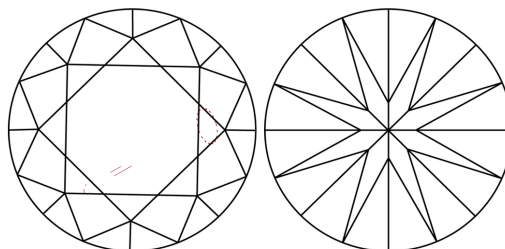
Polish **EXCELLENT**
 Symmetry **EXCELLENT**
 Fluorescence **NONE**
 Inscription(s) **IGI LG618458043**

Comments: As Grown - No indication of post-growth treatment.
 This Laboratory Grown Diamond was created by High Pressure High Temperature (HPHT) growth process.
 Type II

PROPORTIONS



CLARITY CHARACTERISTICS



KEY TO SYMBOLS

Red symbols indicate internal characteristics.
 Green symbols indicate external characteristics.

GRADING SCALES

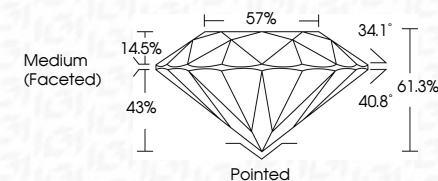
CLARITY

| IF | VVS ¹⁻² | VS ¹⁻² | SI ¹⁻² | I ¹⁻³ |
|---------------------|-----------------------------|------------------------|-------------------|------------------|
| Internally Flawless | Very Very Slightly Included | Very Slightly Included | Slightly Included | Included |

COLOR

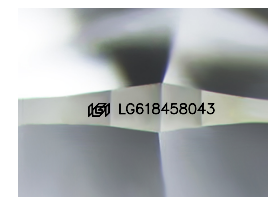
| D | E | F | G | H | I | J | Faint | Very Light | Light |
|---|---|---|---|---|---|---|-------|------------|-------|
|---|---|---|---|---|---|---|-------|------------|-------|

February 24, 2024
 IGI Report Number **LG618458043**
 Description **LABORATORY GROWN
DIAMOND**
 Shape and Cutting Style **ROUND BRILLIANT**
 Measurements **8.18 - 8.23 X 5.03 MM**
GRADING RESULTS
 Carat Weight **2.08 CARATS**
 Color Grade **D**
 Clarity Grade **SI 1**
 Cut Grade **IDEAL**



ADDITIONAL GRADING INFORMATION

Polish **EXCELLENT**
 Symmetry **EXCELLENT**
 Fluorescence **NONE**
 Inscription(s) **IGI LG618458043**
 Comments: As Grown - No indication of post-growth treatment.
 This Laboratory Grown Diamond was created by High Pressure High Temperature (HPHT) growth process.
 Type II



Sample Image Used



| | | | | | | | | | | | | | | | |
|-------------------|---------------------------|-----------------|-----------------------|-------------|---|------|-------|-------|-----|------------------|---------|-----------|-----------|------|-----------------|
| February 24, 2024 | IGI Report No LG618458043 | ROUND BRILLIANT | 8.18 - 8.23 X 5.03 MM | 2.08 CARATS | D | SI 1 | IDEAL | 61.3% | 57% | Medium (Faceted) | Pointed | EXCELLENT | EXCELLENT | NONE | IGI LG618458043 |
| IGI | | | | | | | | | | | | | | | |

Comments: As Grown - No indication of post-growth treatment.
 This Laboratory Grown Diamond was created by High Pressure High Temperature (HPHT) growth process.
 Type II