

**ELECTRONIC COPY**

## LABORATORY GROWN DIAMOND REPORT

January 27, 2024	
IGI Report Number	LG618492904
Description	LABORATORY GROWN DIAMOND
Shape and Cutting Style	ROUND BRILLIANT
Measurements	7.05 - 7.10 X 4.42 MM

## GRADING RESULTS

Carat Weight	1.38 CARAT
Color Grade	E
Clarity Grade	VVS 2
Cut Grade	IDEAL

### ADDITIONAL GRADING INFORMATION

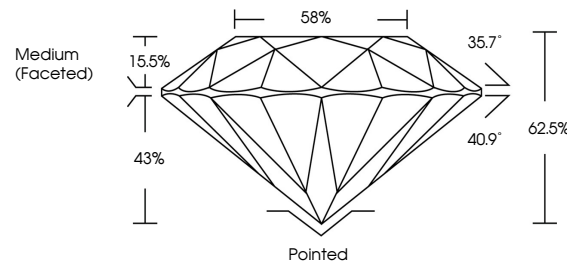
Polish	EXCELLENT
Symmetry	EXCELLENT
Fluorescence	NONE
Inscription(s)	 LG618492904

Comments: As Grown - No indication of post-growth treatment.  
This Laboratory Grown Diamond was created by High Pressure High Temperature (HPHT) growth process.  
Type II

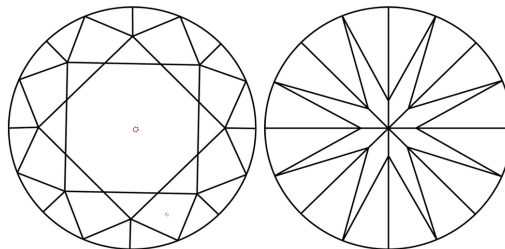
## LABORATORY GROWN DIAMOND REPORT

LG618492904  
Report verification at [igi.org](https://igi.org)

## PROPORTIONS



## CLARITY CHARACTERISTICS



## KEY TO SYMBOLS

Red symbols indicate internal characteristics.  
Green symbols indicate external characteristics.

LABORATORY GROWN  
DIAMOND REPORT

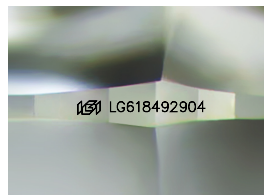
## GRADING SCALES

## CLARITY

IF	VVS <sup>1-2</sup>	VS <sup>1-2</sup>	SI <sup>1-2</sup>	I <sup>1-3</sup>
Internally Flawless	Very Very Slightly Included	Very Slightly Included	Slightly Included	Included

**COLOR**

D E F G H I J Faint Very Light Light



Sample Image Used



© IGI 2020, International Gemological Institute

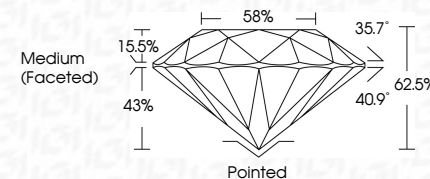
FD - 10 20



January 27, 2024	
IGI Report Number	LG618492904
Description	LABORATORY GROWN DIAMOND
Shape and Cutting Style	ROUND BRILLIANT
Measurements	7.05 - 7.10 X 4.42 MM

## GRADING RESULTS

Carat Weight	1.38 CARAT
Color Grade	E
Clarity Grade	VVS 2
Cut Grade	IDEAL



### ADDITIONAL GRADING INFORMATION

Polish	EXCELLENT
Symmetry	EXCELLENT
Fluorescence	NONE
Inscription(s)	<del>LG6</del> LG618492904
Comments: As Grown - No indication of post-growth treatment.	
This Laboratory Grown Diamond was created by High Pressure High Temperature (HPHT) growth process.	
Type II	

January 27, 2024	GI Report No LG618492904	ROUND BRILLIANT	7.05 - 7.10 X 4.42 MM	Color Grade	1.38 CARAT
				Clarity Grade	E
				Cut Grade	VVS 2
				Depth	IDEAL
				Table	62.5%
				Girdle	65%
				Medium (Faceted)	
				Culet	Pointed
				Polish	EXCELLENT
				Symmetry	EXCELLENT
				Fluorescence	NONE
				Inscriptions(s)	1681 LG618492904
				Comments:	
					- No indication of post-growth treatment.
					The Laboratory Grown Diamond was created by High Pressure High Temperature (HPHT) growth process.
					Type IIa