



**ELECTRONIC COPY**

**LABORATORY GROWN DIAMOND REPORT**

February 6, 2024  
 IGI Report Number **LG618497903**  
 Description **LABORATORY GROWN  
DIAMOND**  
 Shape and Cutting Style **ROUND BRILLIANT**  
 Measurements **6.64 - 6.69 X 4.20 MM**

**GRADING RESULTS**

Carat Weight **1.17 CARAT**  
 Color Grade **F**  
 Clarity Grade **VVS 2**  
 Cut Grade **VERY GOOD**

**ADDITIONAL GRADING INFORMATION**

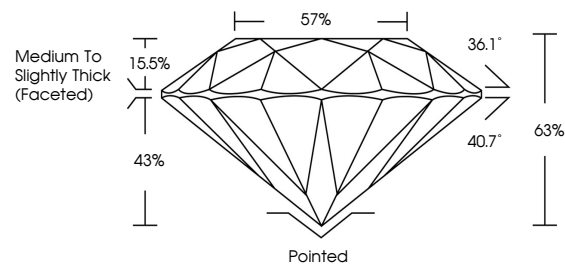
Polish **VERY GOOD**  
 Symmetry **GOOD**  
 Fluorescence **NONE**  
 Inscription(s) **IGI LG618497903**

Comments: This Laboratory Grown Diamond was created by Chemical Vapor Deposition (CVD) growth process and may include post-growth treatment. Type IIa

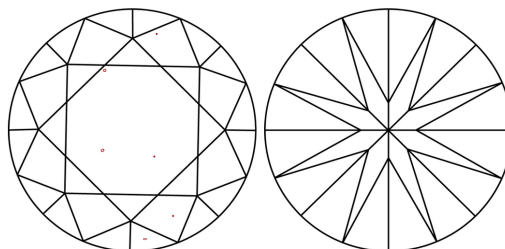
**LABORATORY GROWN DIAMOND REPORT**

**LG618497903**  
 Report verification at [igi.org](http://igi.org)

**PROPORTIONS**



**CLARITY CHARACTERISTICS**



**KEY TO SYMBOLS**

Red symbols indicate internal characteristics.  
 Green symbols indicate external characteristics.

**LABORATORY GROWN  
DIAMOND REPORT**

**GRADING SCALES**

**CLARITY**

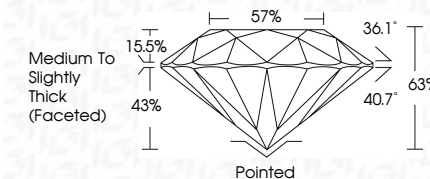
IF	VVS <sup>1-2</sup>	VS <sup>1-2</sup>	SI <sup>1-2</sup>	I <sup>1-3</sup>
Internally Flawless	Very Very Slightly Included	Very Slightly Included	Slightly Included	Included

**COLOR**

D	E	F	G	H	I	J	Faint	Very Light	Light

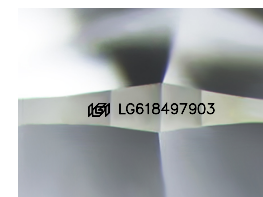
**LABORATORY GROWN DIAMOND REPORT**

February 6, 2024  
 IGI Report Number **LG618497903**  
 Description **LABORATORY GROWN  
DIAMOND**  
 Shape and Cutting Style **ROUND BRILLIANT**  
 Measurements **6.64 - 6.69 X 4.20 MM**  
**GRADING RESULTS**  
 Carat Weight **1.17 CARAT**  
 Color Grade **F**  
 Clarity Grade **VVS 2**  
 Cut Grade **VERY GOOD**



**ADDITIONAL GRADING INFORMATION**

Polish **VERY GOOD**  
 Symmetry **GOOD**  
 Fluorescence **NONE**  
 Inscription(s) **IGI LG618497903**  
 Comments: This Laboratory Grown Diamond was created by Chemical Vapor Deposition (CVD) growth process and may include post-growth treatment. Type IIa



Sample Image Used



**IGI**

February 6, 2024  
 IGI Report No LG618497903  
**ROUND BRILLIANT**  
 6.64 - 6.69 X 4.20 MM  
 Carat Weight **1.17 CARAT**  
 Color Grade **F**  
 Clarity Grade **VVS 2**  
 Cut Grade **VERY GOOD**  
 Depth **43%**  
 Table **57%**  
 Girdle **Medium To Slightly Thick (Faceted)**  
 Culet **Pointed**  
 Polish **VERY GOOD**  
 Symmetry **GOOD**  
 Fluorescence **NONE**  
 Inscription(s) **IGI LG618497903**

Comments: This Laboratory Grown Diamond was created by Chemical Vapor Deposition (CVD) growth process and may include post-growth treatment. Type IIa