



ELECTRONIC COPY

LG618498615
Report verification at igi.org



March 7, 2024

IGI Report Number LG618498615

Description LABORATORY GROWN DIAMOND

Shape and Cutting Style PRINCESS CUT

Measurements 6.18 X 5.96 X 4.41 MM

GRADING RESULTS

Carat Weight 1.41 CARAT

Color Grade F

Clarity Grade VS 1

March 7, 2024

IGI Report Number LG618498615

Description LABORATORY GROWN DIAMOND

Shape and Cutting Style PRINCESS CUT

Measurements 6.18 X 5.96 X 4.41 MM

GRADING RESULTS

Carat Weight 1.41 CARAT

Color Grade F

Clarity Grade VS 1

ADDITIONAL GRADING INFORMATION

Polish EXCELLENT

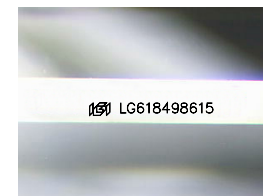
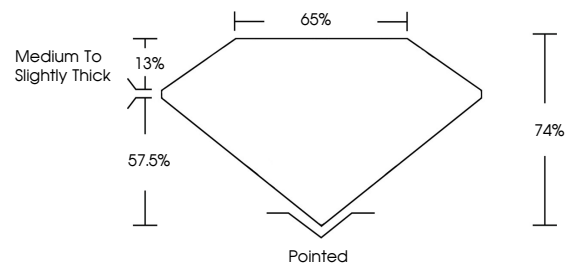
Symmetry EXCELLENT

Fluorescence NONE

Inscription(s) LG618498615

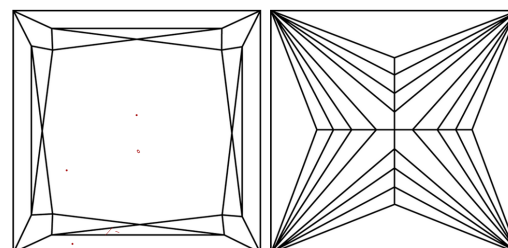
Comments: This Laboratory Grown Diamond was created by Chemical Vapor Deposition (CVD) growth process and may include post-growth treatment. Type IIa

PROPORTIONS



Sample Image Used

CLARITY CHARACTERISTICS



KEY TO SYMBOLS

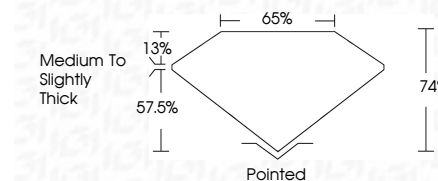
Red symbols indicate internal characteristics. Green symbols indicate external characteristics.

COLOR

D E F G H I J Faint Very Light Light

CLARITY

IF VS 1-2 VS 1-2 SI 1-2 I 1-3 Internally Flawless Very Very Slightly Included Very Slightly Included Slightly Included Included



ADDITIONAL GRADING INFORMATION

Polish EXCELLENT

Symmetry EXCELLENT

Fluorescence NONE

Inscription(s) LG618498615

Comments: This Laboratory Grown Diamond was created by Chemical Vapor Deposition (CVD) growth process and may include post-growth treatment. Type IIa



IGI



March 7, 2024
IGI Report No. LG618498615
PRINCESS CUT
1.41 CARAT
F
VS 1
74%
65%
Medium to Slightly Thick
Pointed
EXCELLENT
EXCELLENT
NONE
LG618498615
Comments: This Laboratory Grown Diamond was created by Chemical Vapor Deposition (CVD) growth process and may include post-growth treatment. Type IIa