



ELECTRONIC COPY

LG619429001

Report verification at igi.org

LABORATORY GROWN DIAMOND REPORT

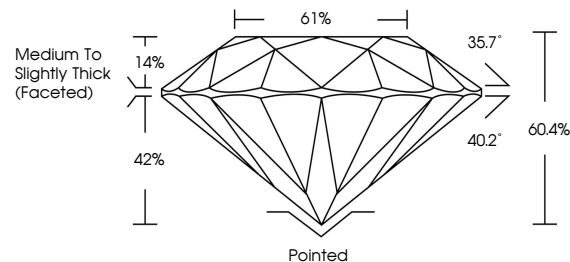
February 1, 2024
 IGI Report Number **LG619429001**
 Description **LABORATORY GROWN
DIAMOND**
 Shape and Cutting Style **ROUND BRILLIANT**
 Measurements **9.17 - 9.26 X 5.58 MM**
GRADING RESULTS
 Carat Weight **3.00 CARATS**
 Color Grade **G**
 Clarity Grade **VVS 2**
 Cut Grade **EXCELLENT**

ADDITIONAL GRADING INFORMATION

Polish **EXCELLENT**
 Symmetry **EXCELLENT**
 Fluorescence **NONE**
 Inscription(s) **IGI LG619429001**

Comments: This Laboratory Grown Diamond was created by Chemical Vapor Deposition (CVD) growth process and may include post-growth treatment. Type IIa

PROPORTIONS



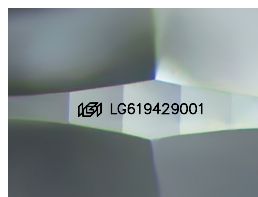
GRADING SCALES

CLARITY

IF	VVS ¹⁻²	VS ¹⁻²	SI ¹⁻²	I ¹⁻³
Internally Flawless	Very Very Slightly Included	Very Slightly Included	Slightly Included	Included

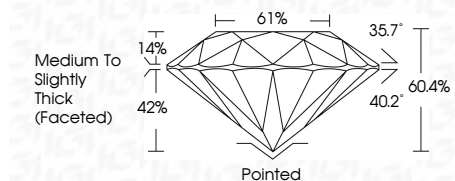
COLOR

D	E	F	G	H	I	J	Faint	Very Light	Light
---	---	---	---	---	---	---	-------	------------	-------



Sample Image Used

February 1, 2024
 IGI Report Number **LG619429001**
 Description **LABORATORY GROWN
DIAMOND**
 Shape and Cutting Style **ROUND BRILLIANT**
 Measurements **9.17 - 9.26 X 5.58 MM**
GRADING RESULTS
 Carat Weight **3.00 CARATS**
 Color Grade **G**
 Clarity Grade **VVS 2**
 Cut Grade **EXCELLENT**



ADDITIONAL GRADING INFORMATION

Polish **EXCELLENT**
 Symmetry **EXCELLENT**
 Fluorescence **NONE**
 Inscription(s) **IGI LG619429001**
 Comments: This Laboratory Grown Diamond was created by Chemical Vapor Deposition (CVD) growth process and may include post-growth treatment. Type IIa



IGI



February 1, 2024
 IGI Report No LG619429001
 ROUND BRILLIANT
 9.17 - 9.26 X 5.58 MM
 Carat Weight 3.00 CARATS
 Color Grade G
 Clarity Grade VVS 2
 Cut Grade EXCELLENT
 Depth 60.4%
 Table 61%
 Girdle Medium To Slightly Thick (Faceted)
 Culet Pointed
 Polish EXCELLENT
 Symmetry EXCELLENT
 Fluorescence NONE
 Inscription(s) IGI LG619429001
 Comments: This Laboratory Grown Diamond was created by Chemical Vapor Deposition (CVD) growth process and may include post-growth treatment. Type IIa