

ELECTRONIC COPY

LABORATORY GROWN DIAMOND REPORT

January 31, 2024	
IGI Report Number	LG619438304
Description	LABORATORY GROWN DIAMOND
Shape and Cutting Style	MARQUISE BRILLIANT
Measurements	10.57 X 5.13 X 3.20 MM

GRADING RESULTS

Carat Weight	1.00 CARAT
Color Grade	G
Clarity Grade	VS 1

ADDITIONAL GRADING INFORMATION

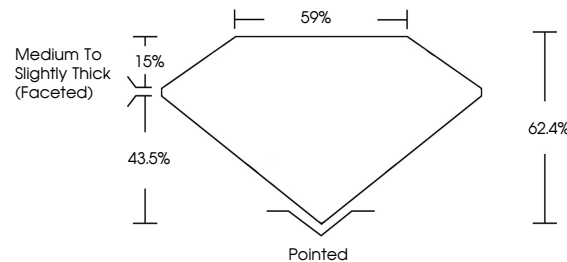
Polish	EXCELLENT
Symmetry	EXCELLENT
Fluorescence	NONE
Inscription(s)	 LG619438304

Comments: This Laboratory Grown Diamond was created by Chemical Vapor Deposition (CVD) growth process and may include post-growth treatment.
Type IIa

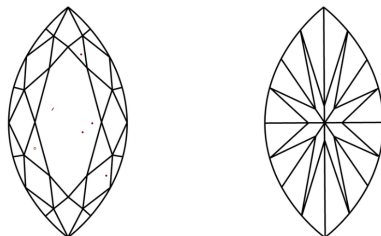
LABORATORY GROWN DIAMOND REPORT

LG619438304
Report verification at lgi.org

PROPORTIONS



CLARITY CHARACTERISTICS



KEY TO SYMBOLS

Red symbols indicate internal characteristics.
Green symbols indicate external characteristics.

LABORATORY GROWN
DIAMOND REPORT

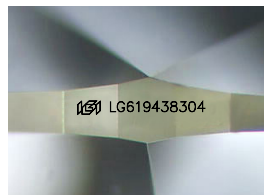
GRADING SCALES

CLARITY

IF	VVS ¹⁻²	VS ¹⁻²	SI ¹⁻²	I ¹⁻³
Internally Flawless	Very Very Slightly Included	Very Slightly Included	Slightly Included	Included

COLOR

D E F G H I J Faint Very Light Light



Sample Image Used



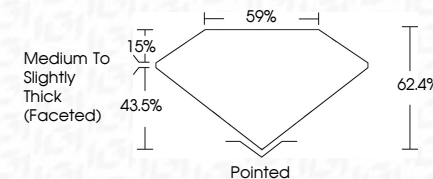
© IGI 2020, International Gemological Institute

FD - 10 20



LABORATORY GROWN DIAMOND REPORT

January 31, 2024	
IGI Report Number	LG619438304
Description	LABORATORY GROWN DIAMOND
Shape and Cutting Style	MARQUISE BRILLIANT
Measurements	10.57 X 5.13 X 3.20 MM
GRADING RESULTS	
Carat Weight	1.00 CARAT
Color Grade	G
Clarity Grade	VS 1



ADDITIONAL GRADING INFORMATION

Polish	EXCELLENT
Symmetry	EXCELLENT
Fluorescence	NONE
Inscription(s)	15 LG619438304

Comments: This Laboratory Grown Diamond was created by Chemical Vapor Deposition (CVD) growth process and may include post-growth treatment.
Type IIa

January 31, 2024	1.00 CARAT
GI Report No G619493904	VSI
MARQUESE BRILLIANT	62.4%
	57%
10.57 X 6.13 X 3.20 MM	Medium to Slightly Thick Faceted
Carat Weight	Pointed
Color Grade	EXCELLENT
Clarity Grade	EXCELLENT
Depth	NONE
Table	68% L6519493904
Girdle	
Fluorescence	
Symmetry	
Inscription(s)	
Polish	
Quiet	
Comments:	
	This Laboratory Grown Diamond was created by Chemical Vapor Deposition (CVD) growth process and may include post-growth treatment.
Type IId	

Comments:
This Laboratory Grown Diamond was created by Chemical Vapor Deposition (CVD) growth process and may include post-growth treatment