



**ELECTRONIC COPY**

## LABORATORY GROWN DIAMOND REPORT

|                         |                             |
|-------------------------|-----------------------------|
| February 6, 2024        |                             |
| IGI Report Number       | LG620402555                 |
| Description             | LABORATORY GROWN<br>DIAMOND |
| Shape and Cutting Style | PRINCESS CUT                |
| Measurements            | 6.38 X 6.22 X 4.37 MM       |

## GRADING RESULTS

|               |            |
|---------------|------------|
| Carat Weight  | 1.51 CARAT |
| Color Grade   | E          |
| Clarity Grade | VS 1       |

### ADDITIONAL GRADING INFORMATION

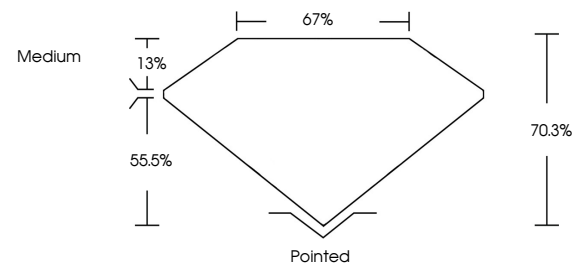
|                |   |
|----------------|---|
| Polish         | EXCELLENT   |
| Symmetry       | EXCELLENT   |
| Fluorescence   | NONE  |
| Inscription(s) |  LG620402555 |

Comments: This Laboratory Grown Diamond was created by Chemical Vapor Deposition (CVD) growth process and may include post-growth treatment.  
Type IIa

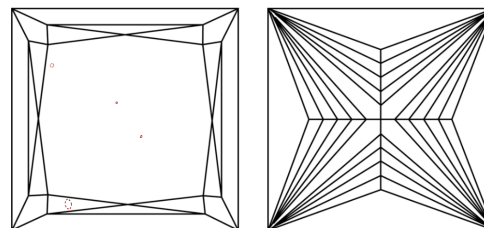
## LABORATORY GROWN DIAMOND REPORT

LG620402555  
Report verification at [igi.org](https://igi.org)

## PROPORTIONS



## CLARITY CHARACTERISTICS



## KEY TO SYMBOLS

Red symbols indicate internal characteristics.  
Green symbols indicate external characteristics.

LABORATORY GROWN  
DIAMOND REPORT

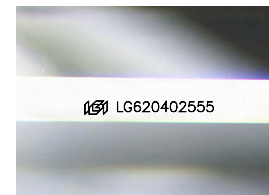
## GRADING SCALES

## CLARITY

| IF                  | VVS <sup>1-2</sup>          | VS <sup>1-2</sup>      | SI <sup>1-2</sup> | I <sup>1-3</sup> |
|---------------------|-----------------------------|------------------------|-------------------|------------------|
| Internally Flawless | Very Very Slightly Included | Very Slightly Included | Slightly Included | Included         |

**COLOR**

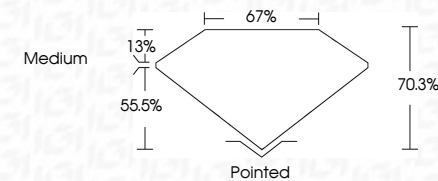
D E F G H I J Faint Very Light Light



Sample Image Used



|                         |                             |
|-------------------------|-----------------------------|
| February 6, 2024        |                             |
| IGI Report Number       | LG620402555                 |
| Description             | LABORATORY GROWN<br>DIAMOND |
| Shape and Cutting Style | PRINCESS CUT                |
| Measurements            | 6.38 X 6.22 X 4.37 MM       |
| <b>GRADING RESULTS</b>  |                             |
| Carat Weight            | 1.51 CARAT                  |
| Color Grade             | E                           |
| Clarity Grade           | VS 1                        |



### ADDITIONAL GRADING INFORMATION

|                |                  |
|----------------|------------------|
| Polish         | EXCELLENT        |
| Symmetry       | EXCELLENT        |
| Fluorescence   | NONE             |
| Inscription(s) | 1151 LG620402555 |

Comments: This Laboratory Grown Diamond was created by Chemical Vapor Deposition (CVD) growth process and may include post-growth treatment.  
Type IIa



© IGI 2020, International Gemological Institute

FD - 10 20

**www.igi.org**

THIS DOCUMENT WAS PRODUCED WITH THE FOLLOWING SECURITY MEASURES: SPECIAL DOCUMENT PAPER, INK SCREENS, WATERMARK, BACKGROUND DESIGNS, HOLOGRAM AND OTHER SECURITY FEATURES NOT LISTED AND DO EXCEED DOCUMENT SECURITY INDUSTRY GUIDELINES

February 6, 2024  
 IGI Report No LG620402555  
 PRINCESS CITT

|             |               |       |       |        |         |           |           |              |            |
|-------------|---------------|-------|-------|--------|---------|-----------|-----------|--------------|------------|
| 1.51 CARAT  | VS 1          | 70.3% | 67%   | Medium | Pointed | EXCELLENT | EXCELLENT | NONE         | 1.51 CARAT |
| Color Grade | Clarity Grade | Depth | Table | Girdle | Quiet   | Polish    | Symmetry  | Fluorescence | 1.51 CARAT |
| Color Grade | Clarity Grade | Depth | Table | Girdle | Quiet   | Polish    | Symmetry  | Fluorescence | 1.51 CARAT |

**Comments:**  
This Laboratory Grown Diamond was created by Chemical Vapor Deposition (CVD) growth process and may include post-growth treatment.