



ELECTRONIC COPY

LABORATORY GROWN DIAMOND REPORT

LG620403254

Report verification at igi.org

LABORATORY GROWN
DIAMOND REPORT

LABORATORY GROWN DIAMOND REPORT

LABORATORY GROWN DIAMOND REPORT

February 7, 2024
 IGI Report Number **LG620403254**
 Description **LABORATORY GROWN
DIAMOND**
 Shape and Cutting Style **ROUND BRILLIANT**
 Measurements **7.12 - 7.16 X 4.34 MM**

GRADING RESULTS

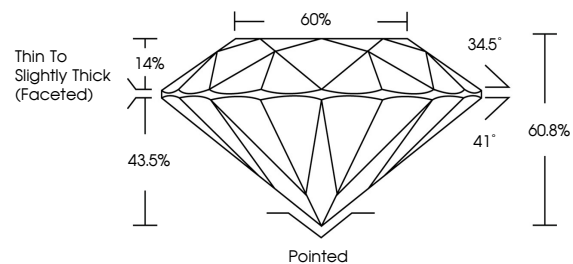
Carat Weight **1.37 CARAT**
 Color Grade **F**
 Clarity Grade **SI 1**
 Cut Grade **IDEAL**

ADDITIONAL GRADING INFORMATION

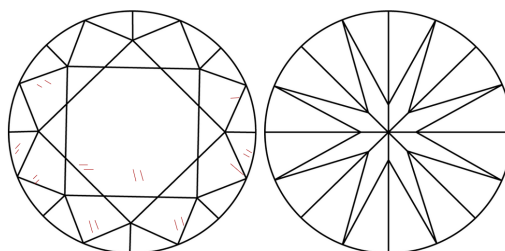
Polish **EXCELLENT**
 Symmetry **EXCELLENT**
 Fluorescence **NONE**
 Inscription(s) **LG620403254**

Comments: As Grown - No indication of post-growth treatment.
 This Laboratory Grown Diamond was created by High Pressure High Temperature (HPHT) growth process.
 Type II

PROPORTIONS



CLARITY CHARACTERISTICS



KEY TO SYMBOLS

Red symbols indicate internal characteristics.
 Green symbols indicate external characteristics.

GRADING SCALES

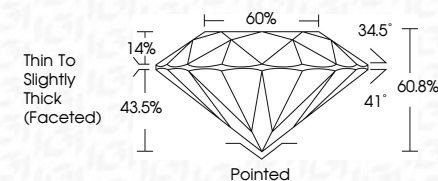
CLARITY

IF	VVS ¹⁻²	VS ¹⁻²	SI ¹⁻²	I ¹⁻³
Internally Flawless	Very Very Slightly Included	Very Slightly Included	Slightly Included	Included

COLOR

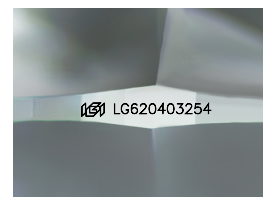
D	E	F	G	H	I	J	Faint	Very Light	Light
---	---	---	---	---	---	---	-------	------------	-------

February 7, 2024
 IGI Report Number **LG620403254**
 Description **LABORATORY GROWN
DIAMOND**
 Shape and Cutting Style **ROUND BRILLIANT**
 Measurements **7.12 - 7.16 X 4.34 MM**
GRADING RESULTS
 Carat Weight **1.37 CARAT**
 Color Grade **F**
 Clarity Grade **SI 1**
 Cut Grade **IDEAL**



ADDITIONAL GRADING INFORMATION

Polish **EXCELLENT**
 Symmetry **EXCELLENT**
 Fluorescence **NONE**
 Inscription(s) **LG620403254**
 Comments: As Grown - No indication of post-growth treatment.
 This Laboratory Grown Diamond was created by High Pressure High Temperature (HPHT) growth process.
 Type II



Sample Image Used



IGI

February 7, 2024
 IGI Report No **LG620403254**
ROUND BRILLIANT
 7.12 - 7.16 X 4.34 MM
 1.37 CARAT
 Carat Weight **F**
 Color Grade **SI 1**
 Clarity Grade **IDEAL**
 Depth **60.8%**
 Table **60%**
 Girdle **Thin To Slightly Thick (Faceted)**
 Culet **Pointed**
 Polish **EXCELLENT**
 Symmetry **EXCELLENT**
 Fluorescence **NONE**
 Inscription(s) **LG620403254**
 Comments: As Grown - No indication of post-growth treatment.
 This Laboratory Grown Diamond was created by High Pressure High Temperature (HPHT) growth process.
 Type II