



ELECTRONIC COPY

LABORATORY GROWN DIAMOND REPORT

February 15, 2024
 IGI Report Number **LG620416779**
 Description **LABORATORY GROWN
DIAMOND**
 Shape and Cutting Style **CUT CORNERED RECTANGULAR
MODIFIED BRILLIANT**
 Measurements **6.67 X 5.03 X 3.49 MM**
GRADING RESULTS
 Carat Weight **1.01 CARAT**
 Color Grade **F**
 Clarity Grade **SI 2**

ADDITIONAL GRADING INFORMATION

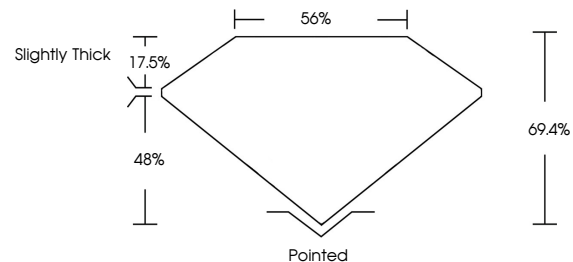
Polish **EXCELLENT**
 Symmetry **VERY GOOD**
 Fluorescence **NONE**
 Inscription(s) **IGI LG620416779**

Comments: This Laboratory Grown Diamond was created by Chemical Vapor Deposition (CVD) growth process and may include post-growth treatment. Type IIa

LABORATORY GROWN DIAMOND REPORT

LG620416779
 Report verification at igi.org

PROPORTIONS



**LABORATORY GROWN
DIAMOND REPORT**

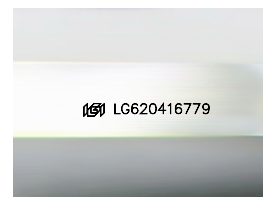
GRADING SCALES

CLARITY

IF	VVS ¹⁻²	VS ¹⁻²	SI ¹⁻²	I ¹⁻³
Internally Flawless	Very Very Slightly Included	Very Slightly Included	Slightly Included	Included

COLOR

D	E	F	G	H	I	J	Faint	Very Light	Light
---	---	---	---	---	---	---	-------	------------	-------



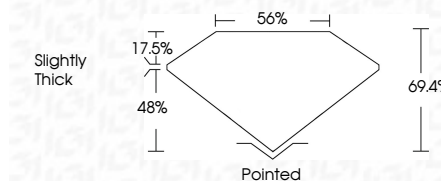
Sample Image Used

LABORATORY GROWN DIAMOND REPORT

February 15, 2024
 IGI Report Number **LG620416779**
 Description **LABORATORY GROWN
DIAMOND**
 Shape and Cutting Style **CUT CORNERED
RECTANGULAR MODIFIED
BRILLIANT**
 Measurements **6.67 X 5.03 X 3.49 MM**
GRADING RESULTS
 Carat Weight **1.01 CARAT**
 Color Grade **F**
 Clarity Grade **SI 2**

ADDITIONAL GRADING INFORMATION

Polish **EXCELLENT**
 Symmetry **VERY GOOD**
 Fluorescence **NONE**
 Inscription(s) **IGI LG620416779**
 Comments: This Laboratory Grown Diamond was created by Chemical Vapor Deposition (CVD) growth process and may include post-growth treatment. Type IIa



IGI

February 15, 2024
 IGI Report No **LG620416779**
CUT CORNERED RECT. MODIFIED BRILLIANT
6.67 X 5.03 X 3.49 MM
 Carat Weight **1.01 CARAT**
 Color Grade **F**
 Clarity Grade **SI 2**
 Depth **69.4%**
 Table **56%**
 Girdle **Slightly Thick**
 Culet **Pointed**
 Polish **EXCELLENT**
 Symmetry **VERY GOOD**
 Fluorescence **NONE**
 Inscription(s) **IGI LG620416779**

Comments: This Laboratory Grown Diamond was created by Chemical Vapor Deposition (CVD) growth process and may include post-growth treatment. Type IIa