



**ELECTRONIC COPY**

LG620417042  
Report verification at igi.org

**LABORATORY GROWN DIAMOND REPORT**

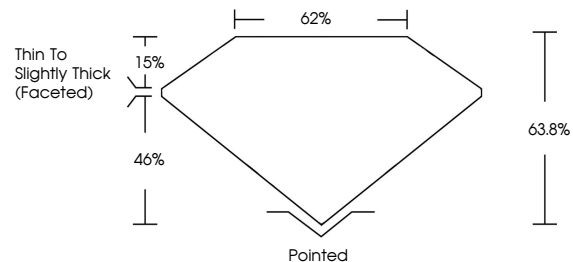
February 16, 2024  
IGI Report Number **LG620417042**  
Description **LABORATORY GROWN  
DIAMOND**  
Shape and Cutting Style **RECTANGULAR CUSHION  
BRILLIANT**  
Measurements **7.55 X 6.25 X 3.99 MM**  
**GRADING RESULTS**  
Carat Weight **1.50 CARAT**  
Color Grade **E**  
Clarity Grade **VVS 2**

**ADDITIONAL GRADING INFORMATION**

Polish **EXCELLENT**  
Symmetry **VERY GOOD**  
Fluorescence **NONE**  
Inscription(s) **IGI LG620417042**

Comments: This Laboratory Grown Diamond was created by Chemical Vapor Deposition (CVD) growth process and may include post-growth treatment. Type IIa

**PROPORTIONS**



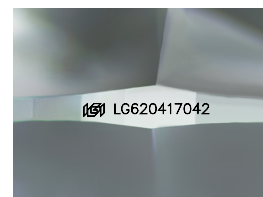
**GRADING SCALES**

**CLARITY**

IF	VVS <sup>1-2</sup>	VS <sup>1-2</sup>	SI <sup>1-2</sup>	I <sup>1-3</sup>
Internally Flawless	Very Very Slightly Included	Very Slightly Included	Slightly Included	Included

**COLOR**

D	E	F	G	H	I	J	Faint	Very Light	Light

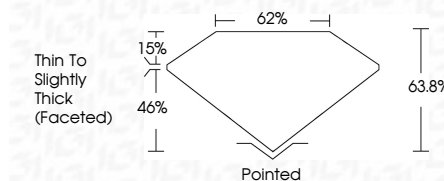


Sample Image Used

February 16, 2024  
IGI Report Number **LG620417042**  
Description **LABORATORY GROWN  
DIAMOND**  
Shape and Cutting Style **RECTANGULAR CUSHION  
BRILLIANT**  
Measurements **7.55 X 6.25 X 3.99 MM**  
**GRADING RESULTS**  
Carat Weight **1.50 CARAT**  
Color Grade **E**  
Clarity Grade **VVS 2**

**ADDITIONAL GRADING INFORMATION**

Polish **EXCELLENT**  
Symmetry **VERY GOOD**  
Fluorescence **NONE**  
Inscription(s) **IGI LG620417042**  
Comments: This Laboratory Grown Diamond was created by Chemical Vapor Deposition (CVD) growth process and may include post-growth treatment. Type IIa



**IGI**

February 16, 2024  
IGI Report No LG620417042  
**RECTANGULAR CUSHION BRILLIANT**  
7.55 X 6.25 X 3.99 MM  
1.50 CARAT  
E  
VVS 2  
63.8%  
62%  
Thin To Slightly Thick (Faceted)  
Pointed  
EXCELLENT  
VERY GOOD  
NONE  
IGI LG620417042

Comments: This Laboratory Grown Diamond was created by Chemical Vapor Deposition (CVD) growth process and may include post-growth treatment. Type IIa