



ELECTRONIC COPY

LG620417157

Report verification at igi.org

LABORATORY GROWN DIAMOND REPORT

February 19, 2024
IGI Report Number **LG620417157**

Description **LABORATORY GROWN
DIAMOND**

Shape and Cutting Style **RECTANGULAR CUSHION
BRILLIANT**

Measurements **7.48 X 6.42 X 4.18 MM**

GRADING RESULTS

Carat Weight **1.51 CARAT**

Color Grade **E**

Clarity Grade **VS 1**

ADDITIONAL GRADING INFORMATION

Polish **EXCELLENT**

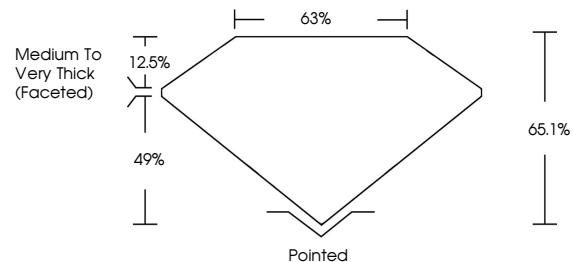
Symmetry **VERY GOOD**

Fluorescence **NONE**

Inscription(s) **IGI LG620417157**

Comments: This Laboratory Grown Diamond was created by Chemical Vapor Deposition (CVD) growth process and may include post-growth treatment. Type IIa

PROPORTIONS



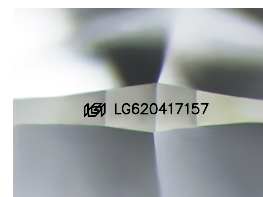
GRADING SCALES

CLARITY

IF	VVS ¹⁻²	VS ¹⁻²	SI ¹⁻²	I ¹⁻³
Internally Flawless	Very Very Slightly Included	Very Slightly Included	Slightly Included	Included

COLOR

D	E	F	G	H	I	J	Faint	Very Light	Light
---	---	---	---	---	---	---	-------	------------	-------



Sample Image Used

February 19, 2024
IGI Report Number **LG620417157**

Description **LABORATORY GROWN
DIAMOND**

Shape and Cutting Style **RECTANGULAR CUSHION
BRILLIANT**

Measurements **7.48 X 6.42 X 4.18 MM**

GRADING RESULTS

Carat Weight **1.51 CARAT**

Color Grade **E**

Clarity Grade **VS 1**

ADDITIONAL GRADING INFORMATION

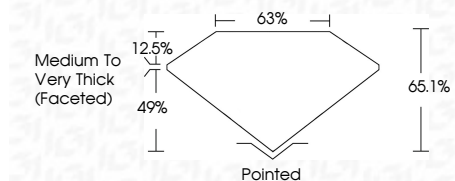
Polish **EXCELLENT**

Symmetry **VERY GOOD**

Fluorescence **NONE**

Inscription(s) **IGI LG620417157**

Comments: This Laboratory Grown Diamond was created by Chemical Vapor Deposition (CVD) growth process and may include post-growth treatment. Type IIa



IGI

February 19, 2024
IGI Report No **LG620417157**
RECTANGULAR CUSHION BRILLIANT
7.48 X 6.42 X 4.18 MM
Carat Weight **1.51 CARAT**
Color Grade **E**
Clarity Grade **VS 1**
Depth **65.1%**
Table **63%**
Girdle **Medium to Very Thick (Faceted)**
Culet **Pointed**
Polish **EXCELLENT**
Symmetry **VERY GOOD**
Fluorescence **NONE**
Inscription(s) **IGI LG620417157**

Comments: This Laboratory Grown Diamond was created by Chemical Vapor Deposition (CVD) growth process and may include post-growth treatment. Type IIa