



**INTERNATIONAL  
GEMOLOGICAL  
INSTITUTE**

**ELECTRONIC COPY**

**LABORATORY GROWN  
DIAMOND REPORT**

**LG620425688**

**IGI LABORATORY GROWN  
DIAMOND ID REPORT**

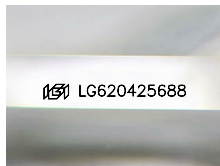
February 9, 2024  
IGI Report Number **LG620425688**  
**CUT CORNERED RECTANGULAR  
MODIFIED BRILLIANT**  
**6.64 X 4.29 X 2.85 MM**  
Carat Weight 0.70 CARAT  
Color Grade H  
Clarity Grade VS 2  
Polish VERY GOOD  
Symmetry EXCELLENT  
Fluorescence NONE  
Inscription(s) LG620425688

Comments: This Laboratory Grown Diamond was created by Chemical Vapor Deposition (CVD) growth process and may include post-growth treatment. Type Ila

**LABORATORY GROWN DIAMOND REPORT**

**IGI LABORATORY GROWN DIAMOND IDENTIFICATION REPORT**

February 9, 2024  
IGI Report Number LG620425688  
Description LABORATORY GROWN DIAMOND  
Shape and Cutting Style CUT CORNERED RECTANGULAR MODIFIED BRILLIANT  
Measurements 6.64 X 4.29 X 2.85 MM



Sample Image Used

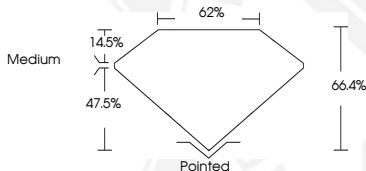
**GRADING RESULTS**

Carat Weight 0.70 CARAT  
Color Grade H  
Clarity Grade VS 2

**ADDITIONAL GRADING INFORMATION**

Polish VERY GOOD  
Symmetry EXCELLENT  
Fluorescence NONE  
Inscription(s) LG620425688

Comments: This Laboratory Grown Diamond was created by Chemical Vapor Deposition (CVD) growth process and may include post-growth treatment. Type Ila



**IGI LABORATORY GROWN  
DIAMOND ID REPORT**

February 9, 2024  
IGI Report Number **LG620425688**  
**CUT CORNERED RECTANGULAR  
MODIFIED BRILLIANT**  
**6.64 X 4.29 X 2.85 MM**  
Carat Weight 0.70 CARAT  
Color Grade H  
Clarity Grade VS 2  
Polish VERY GOOD  
Symmetry EXCELLENT  
Fluorescence NONE  
Inscription(s) LG620425688

Comments: This Laboratory Grown Diamond was created by Chemical Vapor Deposition (CVD) growth process and may include post-growth treatment. Type Ila



THIS DOCUMENT WAS PRODUCED WITH THE FOLLOWING SECURITY MEASURES: SPECIAL DOCUMENT PAPER, INK SCREENS, WATERMARK, BACKGROUND DESIGN, HOLOGRAM AND OTHER SECURITY FEATURES NOT LISTED AND DO EXCEED DOCUMENT SECURITY INDUSTRY GUIDELINES.

For terms & conditions and to verify this report, please visit [www.igi.org](http://www.igi.org)