



**INTERNATIONAL
GEMOLOGICAL
INSTITUTE**

ELECTRONIC COPY

**LABORATORY GROWN
DIAMOND REPORT**

LG620425901

**IGI LABORATORY GROWN
DIAMOND ID REPORT**

February 7, 2024
IGI Report Number **LG620425901**
SQUARE CUSHION BRILLIANT
5.45 X 5.36 X 3.34 MM
Carat Weight 0.84 CARAT
Color Grade FANCY LIGHT BROWNISH PINK
Clarity Grade VS 1
Polish VERY GOOD
Symmetry VERY GOOD
Fluorescence SLIGHT
Inscription(s) **IGI LG620425901**

Comments: This Laboratory Grown Diamond was created by High Pressure High Temperature (HPHT) growth process. Indications of post-growth treatment.

LABORATORY GROWN DIAMOND REPORT

IGI LABORATORY GROWN DIAMOND IDENTIFICATION REPORT

February 7, 2024
IGI Report Number LG620425901
Description LABORATORY GROWN DIAMOND
Shape and Cutting Style SQUARE CUSHION BRILLIANT
Measurements 5.45 X 5.36 X 3.34 MM

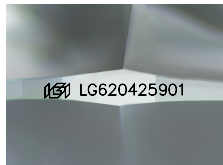
GRADING RESULTS

Carat Weight 0.84 CARAT
Color Grade FANCY LIGHT BROWNISH PINK
Clarity Grade VS 1

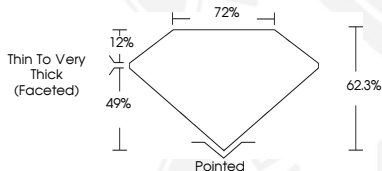
ADDITIONAL GRADING INFORMATION

Polish VERY GOOD
Symmetry VERY GOOD
Fluorescence SLIGHT
Inscription(s) **IGI LG620425901**

Comments: This Laboratory Grown Diamond was created by High Pressure High Temperature (HPHT) growth process. Indications of post-growth treatment.



Sample Image Used



**IGI LABORATORY GROWN
DIAMOND ID REPORT**

February 7, 2024
IGI Report Number **LG620425901**
SQUARE CUSHION BRILLIANT
5.45 X 5.36 X 3.34 MM
Carat Weight 0.84 CARAT
Color Grade FANCY LIGHT BROWNISH PINK
Clarity Grade VS 1
Polish VERY GOOD
Symmetry VERY GOOD
Fluorescence SLIGHT
Inscription(s) **IGI LG620425901**

Comments: This Laboratory Grown Diamond was created by High Pressure High Temperature (HPHT) growth process. Indications of post-growth treatment.



THIS DOCUMENT WAS PRODUCED WITH THE FOLLOWING SECURITY MEASURES: SPECIAL DOCUMENT PAPER, INK SCREENS, WATERMARK, BACKGROUND DESIGN, HOLOGRAM AND OTHER SECURITY FEATURES NOT LISTED AND DO EXCEED DOCUMENT SECURITY INDUSTRY GUIDELINES.

For terms & conditions and to verify this report, please visit www.igi.org