



LABORATORY GROWN DIAMOND REPORT

GRADING RESULTS

ADDITIONAL GRADING INFORMATION

Comments: This Laboratory Grown Diamond was created by Chemical Vapor Deposition (CVD) growth process and may include post-growth treatment.
Type IIa

LG620438162
Report verification at igi.org

Diagram illustrating the proportions of a diamond shape:

- Top width: 58%
- Top-left facet: 14.5%
- Left width: 44%
- Right width: 62.2%
- Bottom: Pointed

Red symbols indicate internal characteristics.
Green symbols indicate external characteristics.

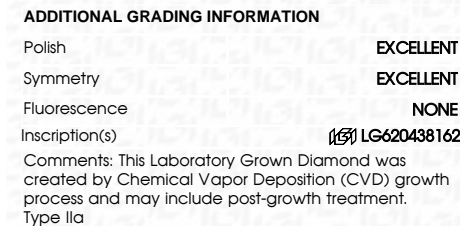
GRADING SCALES

IF	VVS ¹⁻²	VS ¹⁻²	SI ¹⁻²	I ¹⁻³
Internally Flawless	Very Very Slightly Included	Very Slightly Included	Slightly Included	Included

D E F G H I J Faint Very Light Light



February 9, 2024	
IGI Report Number	LG620438162
Description	LABORATORY GROWN DIAMOND
Shape and Cutting Style	OVAL BRILLIANT
Measurements	10.92 X 7.76 X 4.83 MM
GRADING RESULTS	
Carat Weight	2.53 CARATS
Color Grade	G
Clarity Grade	VS 1



FD - 10 20

THIS DOCUMENT WAS PRODUCED WITH THE FOLLOWING SECURITY MEASURES: SPECIAL DOCUMENT PAPER, INK SCREENS, WATERMARK, BACKGROUND DESIGNS, HOLOGRAM AND OTHER SECURITY FEATURES NOT LISTED AND DO EXCEED DOCUMENT SECURITY INDUSTRY GUIDELINE

February 9, 2024
IGI Report No LG620438162
OVAL BRILLIANT

10.92 X 7.76 X 4.83 MM	Carat Weight	2.53 CARATS
	Color Grade	G
	Clarity Grade	VS 1
	Depth	62.2%
	Table	56%
	Girdle	Medium To Slightly Thick (rounded)
	Culet	Pointed
	Polish	EXCELLENT
	Symmetry	EXCELLENT
	Fluorescence	NONE
	Measurements (s)	4.81 (5.00) 7.81 (7.92)

Comments:
This Laboratory Grown Diamond was created by Chemical Vapor Deposition (CVD) growth process and may include post-growth treatment.